

Product datasheet for **TA340925**

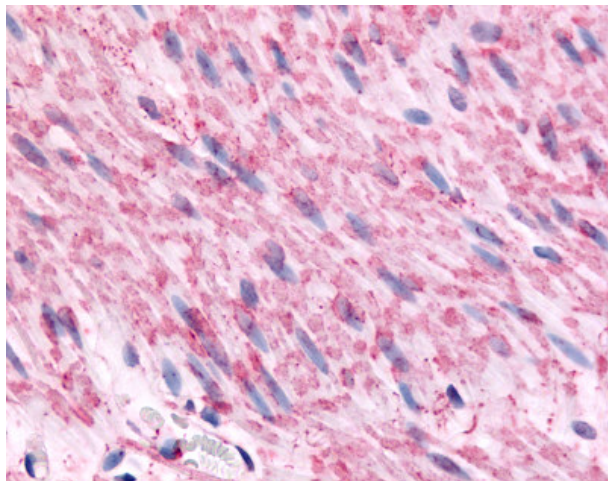
alpha 2C Adrenergic Receptor (ADRA2C) Rabbit Polyclonal Antibody

Product data:

Product Type:	Primary Antibodies
Applications:	IHC
Recommended Dilution:	IHC-P (12 µg/ml)
Reactivity:	Human (Predicted: Dog)
Host:	Rabbit
Clonality:	Polyclonal
Immunogen:	ADRA2C antibody was raised against synthetic 18 amino acid peptide from 3rd cytoplasmic domain of human ADRA2C. Percent identity with other species by BLAST analysis: Human, Gibbon, Monkey (100%); Gorilla, Panda, Dog (94%); Mouse, Rat (89%).
Formulation:	PBS, 0.1% sodium azide.
Concentration:	lot specific
Purification:	Immunoaffinity purified
Conjugation:	Unconjugated
Storage:	Store at -20°C as received.
Stability:	Stable for 12 months from date of receipt.
Gene Name:	adrenoceptor alpha 2C
Database Link:	NP_000674 Entrez Gene 488793 Dog Entrez Gene 152 Human P18825
Synonyms:	ADRA2L2; ADRA2RL2; ADRARL2; ALPHA2CAR
Protein Families:	Druggable Genome, GPCR, Transmembrane
Protein Pathways:	Neuroactive ligand-receptor interaction



[View online »](#)

Product images:

Anti-ADRA2C antibody IHC of human artery, smooth muscle. Immunohistochemistry of formalin-fixed, paraffin-embedded tissue after heat-induced antigen retrieval.