

Product datasheet for **TA340924**

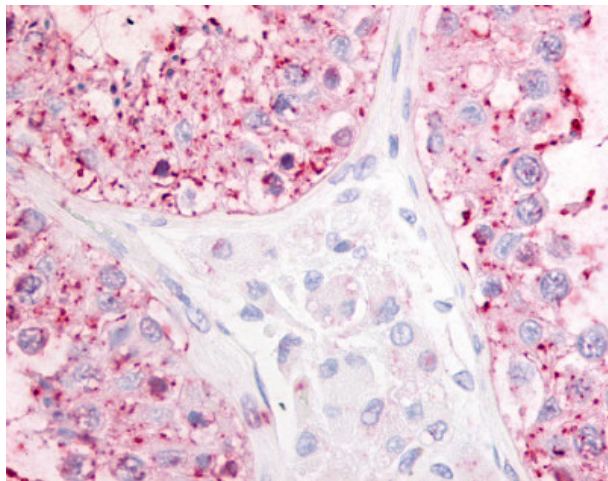
OGR1 (GPR68) Rabbit Polyclonal Antibody

Product data:

Product Type:	Primary Antibodies
Applications:	IHC
Recommended Dilution:	IHC-P (20 µg/ml)
Reactivity:	Human (Predicted: Bovine, Dog)
Host:	Rabbit
Clonality:	Polyclonal
Immunogen:	GPR68 / OGR1 antibody was raised against synthetic 18 amino acid peptide from 2nd cytoplasmic domain of human GPR68. Percent identity with other species by BLAST analysis: Human, Gorilla, Gibbon, Monkey, Marmoset, Mouse, Rat, Hamster, Elephant, Panda, Bat, Horse, Rabbit, Pig (100%); Dog, Bovine (94%); Chicken, Platypus (89%).
Formulation:	PBS, 0.1% sodium azide.
Concentration:	lot specific
Purification:	Immunoaffinity purified
Conjugation:	Unconjugated
Storage:	Store at -20°C as received.
Stability:	Stable for 12 months from date of receipt.
Gene Name:	G protein-coupled receptor 68
Database Link:	NP_001171147 Entrez Gene 100688992 Dog Entrez Gene 8111 Human Q15743
Synonyms:	GPR12A; OGR1
Protein Families:	Druggable Genome, GPCR, Transmembrane



[View online »](#)

Product images:

Anti-GPR68 antibody IHC of human testis. Immunohistochemistry of formalin-fixed, paraffin-embedded tissue after heat-induced antigen retrieval.