

Product datasheet for **TA340920**

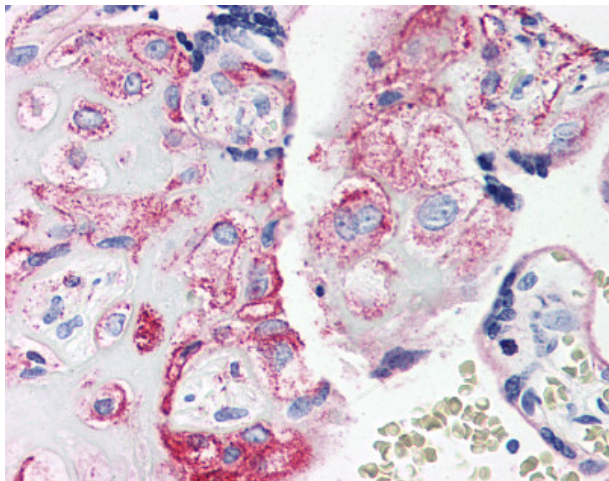
C5R1 (C5AR1) Rabbit Polyclonal Antibody

Product data:

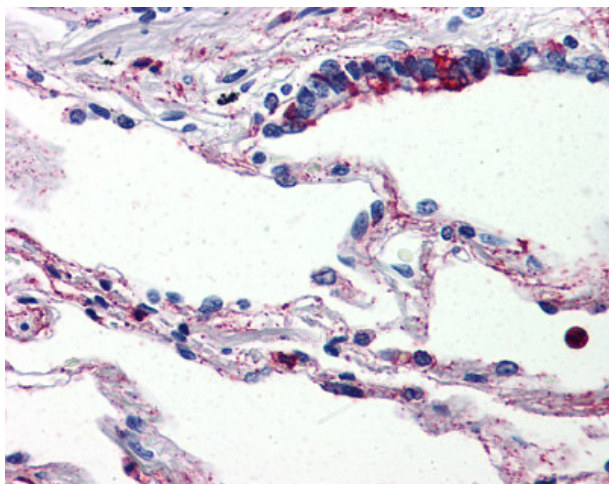
Product Type:	Primary Antibodies
Applications:	IHC
Recommended Dilution:	IHC-P (10 µg/ml)
Reactivity:	Human
Host:	Rabbit
Clonality:	Polyclonal
Immunogen:	C5AR1 / CD88 / C5a Receptor antibody was raised against synthetic 18 amino acid peptide from internal region of human C5AR1 / CD88. Percent identity with other species by BLAST analysis: Human, Chimpanzee, Gorilla, Orangutan, Monkey (100%); Gibbon (89%).
Formulation:	PBS, 0.1% sodium azide.
Concentration:	lot specific
Purification:	Immunoaffinity purified
Conjugation:	Unconjugated
Storage:	Store at -20°C as received.
Stability:	Stable for 12 months from date of receipt.
Gene Name:	complement component 5a receptor 1
Database Link:	NP_001727 Entrez Gene 728 Human P21730
Synonyms:	C5A; C5AR; C5R1; CD88
Protein Families:	Druggable Genome, GPCR, Transmembrane
Protein Pathways:	Complement and coagulation cascades, Neuroactive ligand-receptor interaction



[View online »](#)

Product images:

Anti-C5AR1 / CD88 antibody IHC of human placenta. Immunohistochemistry of formalin-fixed, paraffin-embedded tissue after heat-induced antigen retrieval.



Anti-C5AR1 / CD88 antibody IHC of human lung. Immunohistochemistry of formalin-fixed, paraffin-embedded tissue after heat-induced antigen retrieval.