

Product datasheet for **TA340918**

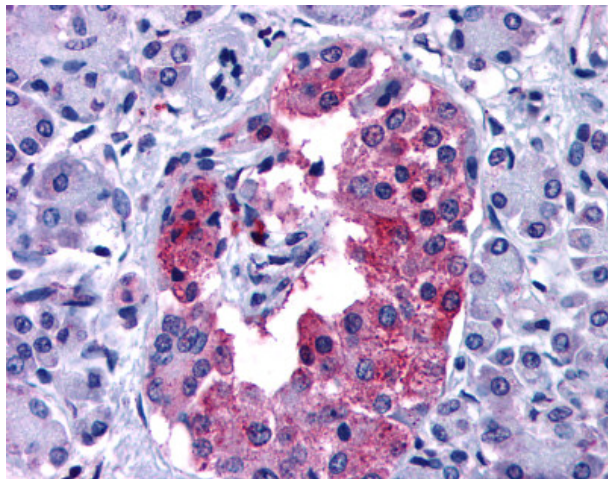
Gastric Inhibitory Polypeptide Receptor (GIPR) Rabbit Polyclonal Antibody

Product data:

Product Type:	Primary Antibodies
Applications:	IHC
Recommended Dilution:	IHC-P (19 µg/ml)
Reactivity:	Human (Predicted: Bat, Dog)
Host:	Rabbit
Clonality:	Polyclonal
Immunogen:	GIPR / GIP Receptor antibody was raised against synthetic 18 amino acid peptide from N-terminal extracellular domain of human GIPR. Percent identity with other species by BLAST analysis: Human, Monkey (100%); Panda, Dog, Bat (94%); Bovine, Rabbit, Horse (89%).
Formulation:	PBS, 0.1% sodium azide.
Concentration:	lot specific
Purification:	Immunoaffinity purified
Conjugation:	Unconjugated
Storage:	Store at -20°C as received.
Stability:	Stable for 12 months from date of receipt.
Gene Name:	gastric inhibitory polypeptide receptor
Database Link:	NP_000155 Entrez Gene 484439 Dog Entrez Gene 2696 Human P48546
Synonyms:	PGQTL2
Protein Families:	Druggable Genome, GPCR, Transmembrane
Protein Pathways:	Neuroactive ligand-receptor interaction



[View online »](#)

Product images:

Anti-GIPR antibody IHC of human pancreas. Immunohistochemistry of formalin-fixed, paraffin-embedded tissue after heat-induced antigen retrieval.