

Product datasheet for **TA340917**

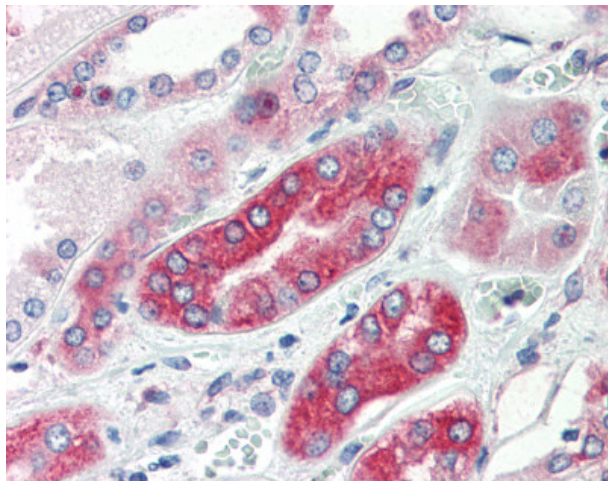
AVPR1A Rabbit Polyclonal Antibody

Product data:

Product Type:	Primary Antibodies
Applications:	IHC
Recommended Dilution:	IHC-P (2.5 µg/ml)
Reactivity:	Human (Predicted: Monkey)
Host:	Rabbit
Clonality:	Polyclonal
Immunogen:	AVPR1A / V1a Receptor antibody was raised against synthetic 18 amino acid peptide from cytoplasmic domain of human AVPR1A. Percent identity with other species by BLAST analysis: Human (100%); Gorilla, Gibbon, Monkey (94%); Marmoset, Horse, Rabbit (89%); Mouse (83%).
Formulation:	PBS, 0.1% sodium azide.
Concentration:	lot specific
Purification:	Immunoaffinity purified
Conjugation:	Unconjugated
Storage:	Store at -20°C as received.
Stability:	Stable for 12 months from date of receipt.
Gene Name:	arginine vasopressin receptor 1A
Database Link:	NP_000697 Entrez Gene 717041 Monkey Entrez Gene 552 Human P37288
Synonyms:	AVPR1; AVPR V1a; V1aR
Protein Families:	Druggable Genome, GPCR, Transmembrane
Protein Pathways:	Calcium signaling pathway, Neuroactive ligand-receptor interaction, Vascular smooth muscle contraction



[View online »](#)

Product images:

Anti-AVPR1A antibody IHC of human kidney. Immunohistochemistry of formalin-fixed, paraffin-embedded tissue after heat-induced antigen retrieval.