

## Product datasheet for **TA340916**

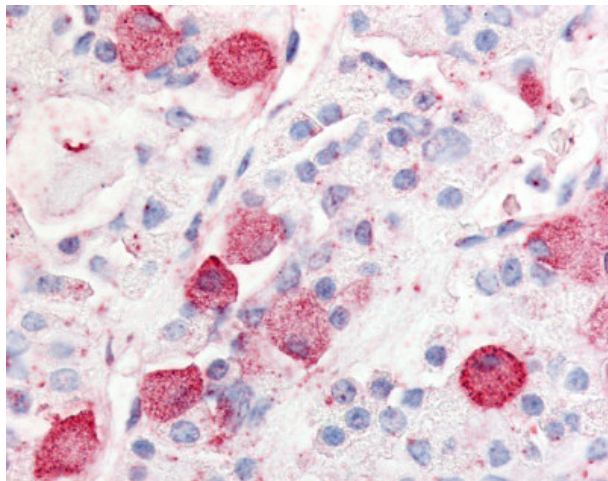
### GPR10 (PRLHR) Rabbit Polyclonal Antibody

#### Product data:

Product Type:	Primary Antibodies
Applications:	IHC
Recommended Dilution:	IHC-P (10 µg/ml)
Reactivity:	Human (Predicted: Monkey, Mouse, Rat, Pig)
Host:	Rabbit
Clonality:	Polyclonal
Immunogen:	PRLHR / GPR10 antibody was raised against synthetic 18 amino acid peptide from 3rd extracellular domain of human PRLHR / GPR10. Percent identity with other species by BLAST analysis: Human, Gorilla, Dog, Bovine, Panda (100%); Monkey, Marmoset, Mouse, Rat, Pig (94%); Horse (89%).
Formulation:	PBS, 0.1% sodium azide.
Concentration:	lot specific
Purification:	Immunoaffinity purified
Conjugation:	Unconjugated
Storage:	Store at -20°C as received.
Stability:	Stable for 12 months from date of receipt.
Gene Name:	prolactin releasing hormone receptor
Database Link:	<a href="#">NP_004239</a> <a href="#">Entrez Gene 226278 Mouse</a> <a href="#">Entrez Gene 246075 Rat</a> <a href="#">Entrez Gene 712538 Monkey</a> <a href="#">Entrez Gene 2834 Human</a> <a href="#">P49683</a>
Synonyms:	GPR10; GR3; PrRPR
Protein Families:	Druggable Genome, GPCR, Transmembrane
Protein Pathways:	Neuroactive ligand-receptor interaction



[View online »](#)

**Product images:**

Anti-PRLHR / GPR10 antibody IHC staining of human anterior pituitary. Immunohistochemistry of formalin-fixed, paraffin-embedded tissue after heat-induced antigen retrieval.