

Product datasheet for **TA340906**

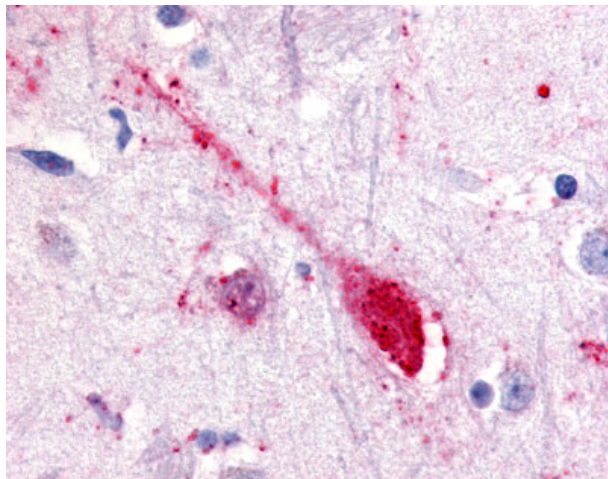
GPR85 Rabbit Polyclonal Antibody

Product data:

Product Type:	Primary Antibodies
Applications:	IHC
Recommended Dilution:	IHC-P (5.5 µg/ml)
Reactivity:	Human
Host:	Rabbit
Clonality:	Polyclonal
Immunogen:	SREB / GPR85 antibody was raised against synthetic 20 amino acid peptide from 2nd extracellular domain of human GPR85. Percent identity with other species by BLAST analysis: Human, Orangutan, Mouse, Rat, Turkey, Chicken, Lizard, Xenopus, Seabass, Stickleback, Pufferfish, Zebrafish (100%).
Formulation:	PBS, 0.1% sodium azide.
Concentration:	lot specific
Purification:	Immunoaffinity purified
Conjugation:	Unconjugated
Storage:	Store at -20°C as received.
Stability:	Stable for 12 months from date of receipt.
Gene Name:	G protein-coupled receptor 85
Database Link:	NP_061843 Entrez Gene 54329 Human P60893
Synonyms:	SREB; SREB2
Protein Families:	Druggable Genome, GPCR, Transmembrane



[View online »](#)

Product images:

Anti-GPR85 antibody IHC of human putamen, neuron. Immunohistochemistry of formalin-fixed, paraffin-embedded tissue after heat-induced antigen retrieval.