

## Product datasheet for **TA340905**

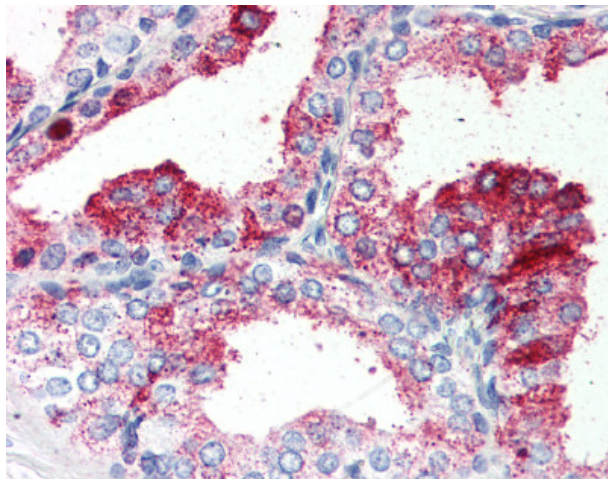
### GPR27 Rabbit Polyclonal Antibody

#### Product data:

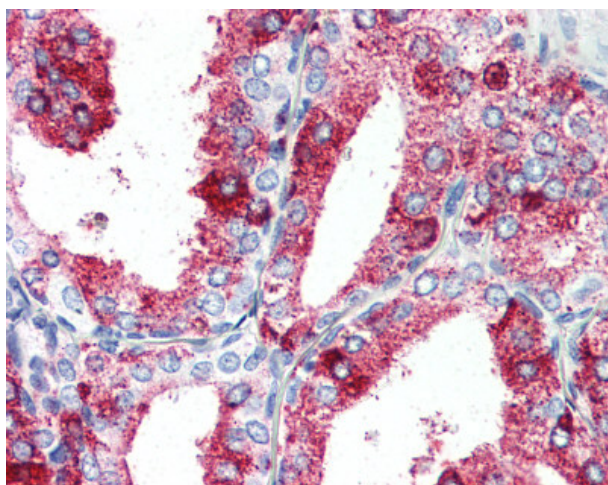
Product Type:	Primary Antibodies
Applications:	IHC
Recommended Dilution:	IHC-P (5 µg/ml)
Reactivity:	Human
Host:	Rabbit
Clonality:	Polyclonal
Immunogen:	GPR27 antibody was raised against synthetic 19 amino acid peptide from 3rd cytoplasmic domain of human GPR27. Percent identity with other species by BLAST analysis: Human, Mouse, Rat, Elephant, Panda (100%); Opossum (89%).
Formulation:	PBS, 0.1% sodium azide.
Concentration:	lot specific
Purification:	Immunoaffinity purified
Conjugation:	Unconjugated
Storage:	Store at -20°C as received.
Stability:	Stable for 12 months from date of receipt.
Gene Name:	G protein-coupled receptor 27
Database Link:	<a href="#">NP_061844</a> <a href="#">Entrez Gene 2850 Human</a> <a href="#">Q9NS67</a>
Synonyms:	SREB1
Protein Families:	Druggable Genome, GPCR, Transmembrane



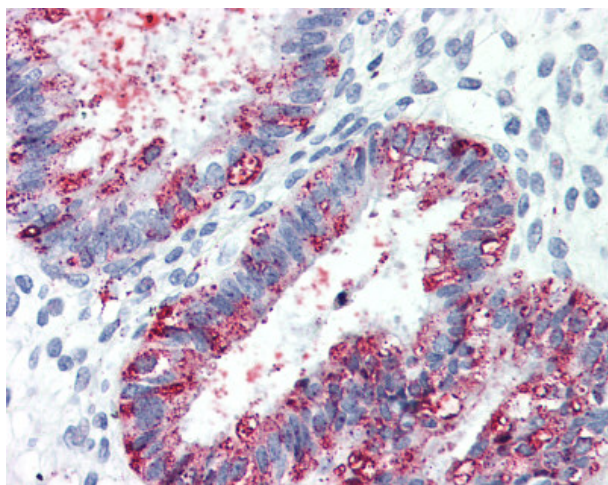
[View online »](#)

**Product images:**

Anti-GPR27 antibody IHC of human prostate. Immunohistochemistry of formalin-fixed, paraffin-embedded tissue after heat-induced antigen retrieval.



Anti-GPR27 antibody IHC of human prostate. Immunohistochemistry of formalin-fixed, paraffin-embedded tissue after heat-induced antigen retrieval.



Anti-GPR27 antibody IHC of human uterus. Immunohistochemistry of formalin-fixed, paraffin-embedded tissue after heat-induced antigen retrieval.