

Product datasheet for **TA340901**

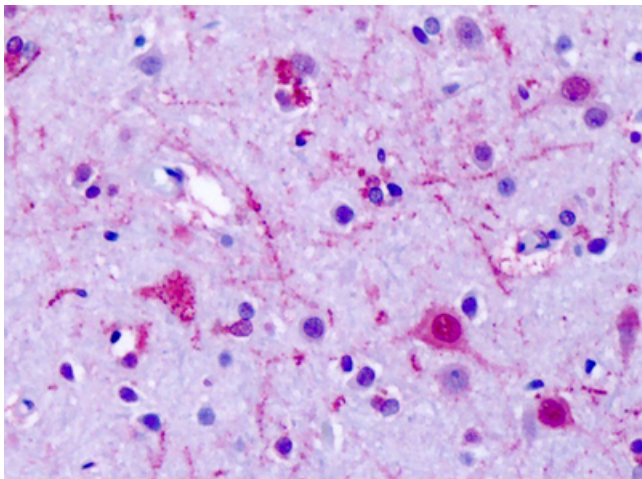
GPR75 Rabbit Polyclonal Antibody

Product data:

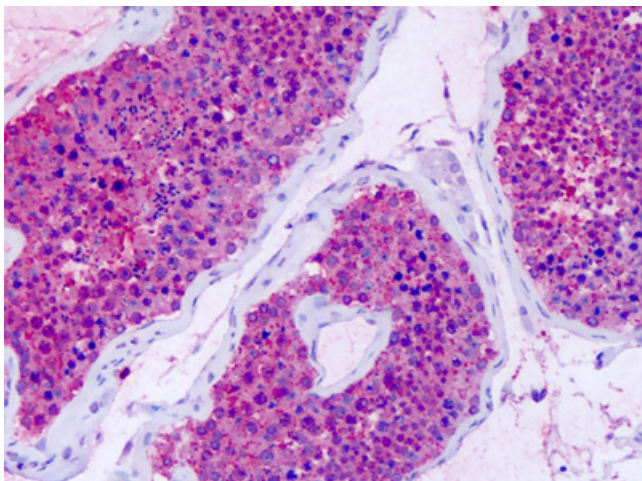
Product Type:	Primary Antibodies
Applications:	IHC
Recommended Dilution:	IHC-P (18 µg/ml)
Reactivity:	Human (Predicted: Monkey, Bat, Rabbit, Xenopus, Zebrafish)
Host:	Rabbit
Clonality:	Polyclonal
Immunogen:	GPR75 antibody was raised against synthetic 16 amino acid peptide from 2nd cytoplasmic domain of human GPR75. Percent identity with other species by BLAST analysis: Human, Elephant, Panda, Bovine, Horse, Pig, Opossum (100%); Gorilla, Monkey, Bat, Rabbit, Lizard, Xenopus, Pufferfish, Zebrafish (94%); Hamster (88%); Mouse, Rat, Chicken (81%).
Formulation:	PBS, 0.1% sodium azide.
Concentration:	lot specific
Purification:	Immunoaffinity purified
Conjugation:	Unconjugated
Storage:	Store at -20°C as received.
Stability:	Stable for 12 months from date of receipt.
Gene Name:	G protein-coupled receptor 75
Database Link:	NP_006785 Entrez Gene 100426871 Monkey Entrez Gene 10936 Human O95800
Synonyms:	GPRchr2; WI31133
Protein Families:	Druggable Genome, GPCR, Transmembrane



[View online »](#)

Product images:

Anti-GPR75 antibody IHC of human brain, cortex, neurons. Immunohistochemistry of formalin-fixed, paraffin-embedded tissue after heat-induced antigen retrieval. Antibody dilution 18 ug/ml.



Anti-GPR75 antibody IHC of human testis. Immunohistochemistry of formalin-fixed, paraffin-embedded tissue after heat-induced antigen retrieval. Antibody dilution 18 ug/ml.