

## Product datasheet for **TA340899**

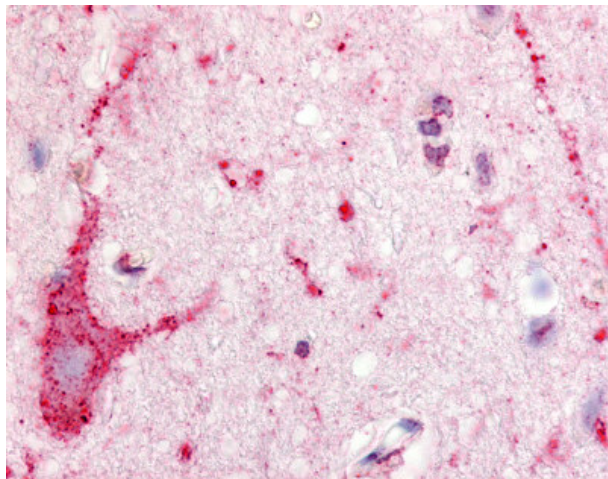
### EDG8 (S1PR5) Rabbit Polyclonal Antibody

#### Product data:

Product Type:	Primary Antibodies
Applications:	IHC
Recommended Dilution:	IHC-P (4 - 7 µg/ml)
Reactivity:	Human
Host:	Rabbit
Clonality:	Polyclonal
Immunogen:	S1PR5 / EDG8 / S1P5 antibody was raised against synthetic 18 amino acid peptide from 2nd cytoplasmic domain of human S1PR5 / EDG8. Percent identity with other species by BLAST analysis: Human, Gorilla (100%); Marmoset (89%); Mouse, Rat, Hamster, Dog, Bat (83%).
Formulation:	PBS, 0.1% sodium azide.
Concentration:	lot specific
Purification:	Immunoaffinity purified
Conjugation:	Unconjugated
Storage:	Store at -20°C as received.
Stability:	Stable for 12 months from date of receipt.
Gene Name:	sphingosine-1-phosphate receptor 5
Database Link:	<a href="#">NP_110387</a> <a href="#">Entrez Gene 53637 Human</a> <a href="#">Q9H228</a>
Synonyms:	Edg-8; EDG8; S1P5; SPPR-1; SPPR-2
Protein Families:	Druggable Genome, GPCR, Transmembrane
Protein Pathways:	Neuroactive ligand-receptor interaction



[View online »](#)

**Product images:**

Anti-S1PR5 / EDG8 antibody IHC of human brain, neuron and glia. Immunohistochemistry of formalin-fixed, paraffin-embedded tissue after heat-induced antigen retrieval.