

## Product datasheet for **TA340896**

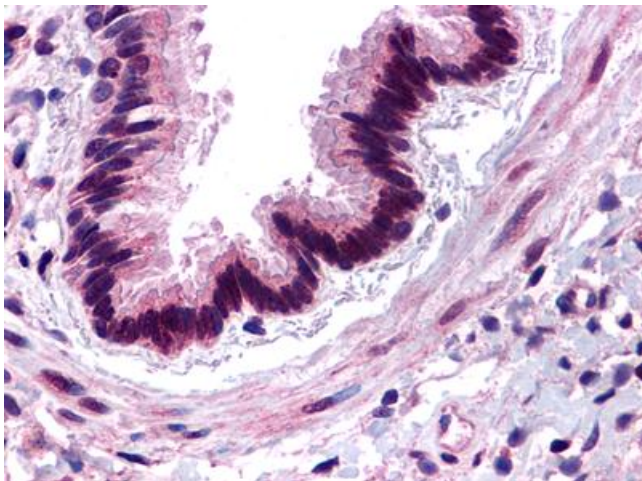
### C3AR1 Rabbit Polyclonal Antibody

#### Product data:

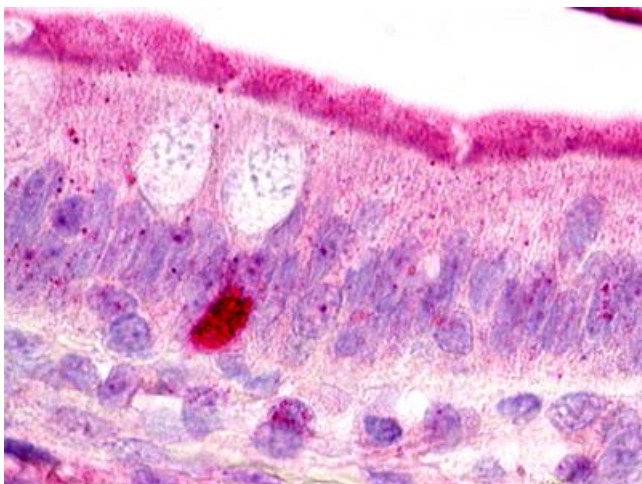
Product Type:	Primary Antibodies
Applications:	IHC
Recommended Dilution:	IHC-P (17.3 µg/ml)
Reactivity:	Human (Predicted: Monkey)
Host:	Rabbit
Clonality:	Polyclonal
Immunogen:	C3AR / C3a Receptor antibody was raised against synthetic 20 amino acid peptide from 2nd extracellular domain of human C3a Receptor. Percent identity with other species by BLAST analysis: Human (100%); Gorilla, Marmoset (95%); Orangutan, Gibbon (90%).
Formulation:	PBS, 0.1% sodium azide.
Concentration:	lot specific
Purification:	Immunoaffinity purified
Conjugation:	Unconjugated
Storage:	Store at -20°C as received.
Stability:	Stable for 12 months from date of receipt.
Gene Name:	complement component 3a receptor 1
Database Link:	<a href="#">NP_004045</a> <a href="#">Entrez Gene 716086 Monkey</a> <a href="#">Entrez Gene 719 Human</a> <a href="#">Q16581</a>
Synonyms:	AZ3B; C3AR; HNFAG09
Protein Families:	Druggable Genome, GPCR, Transmembrane
Protein Pathways:	Complement and coagulation cascades, Neuroactive ligand-receptor interaction



[View online »](#)

**Product images:**

Anti-C3AR / C3a Receptor antibody IHC of human lung, respiratory epithelium. Immunohistochemistry of formalin-fixed, paraffin-embedded tissue after heat-induced antigen retrieval. Antibody dilution 17.3 ug/ml.



Anti-C3AR / C3a Receptor antibody IHC of human small intestine. Immunohistochemistry of formalin-fixed, paraffin-embedded tissue after heat-induced antigen retrieval. Antibody dilution 17.3 ug/ml.