

Product datasheet for **TA340895**

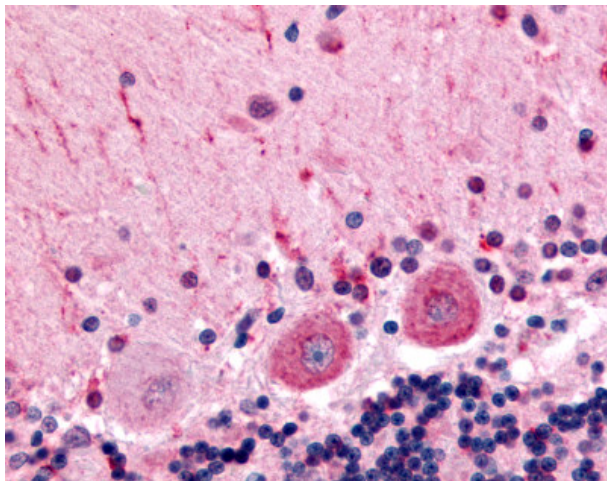
Flamingo homolog 1 (CELSR3) Rabbit Polyclonal Antibody

Product data:

Product Type:	Primary Antibodies
Applications:	IHC
Recommended Dilution:	IHC-P (4 - 6 µg/ml)
Reactivity:	Human (Predicted: Monkey)
Host:	Rabbit
Clonality:	Polyclonal
Immunogen:	CELSR3 antibody was raised against synthetic 17 amino acid peptide from C-terminus of human CELSR3. Percent identity with other species by BLAST analysis: Human, Gorilla (100%); Gibbon, Monkey (94%); Mouse, Rat, Hamster (88%); Elephant, Panda, Rabbit, Xenopus (82%).
Formulation:	PBS, 0.1% sodium azide.
Concentration:	lot specific
Purification:	Immunoaffinity purified
Conjugation:	Unconjugated
Storage:	Store at -20°C as received.
Stability:	Stable for 12 months from date of receipt.
Gene Name:	cadherin EGF LAG seven-pass G-type receptor 3
Database Link:	NP_001398 Entrez Gene 709315 Monkey Entrez Gene 1951 Human Q9NYQ7
Synonyms:	ADGRC3; CDHF11; EGFL1; FMI1; HFMI1; MEGF2; RESDA1
Protein Families:	Druggable Genome, Transmembrane



[View online »](#)

Product images:

Anti-CELSR3 antibody IHC of human brain, Purkinje neurons. Immunohistochemistry of formalin-fixed, paraffin-embedded tissue after heat-induced antigen retrieval.