

Product datasheet for **TA340894**

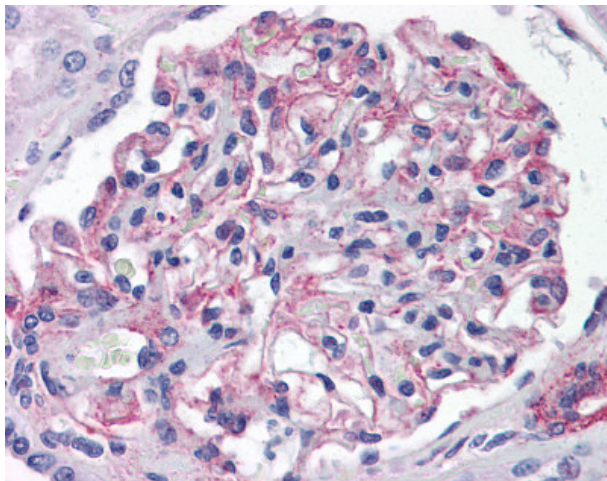
5HT1E Receptor (HTR1E) Rabbit Polyclonal Antibody

Product data:

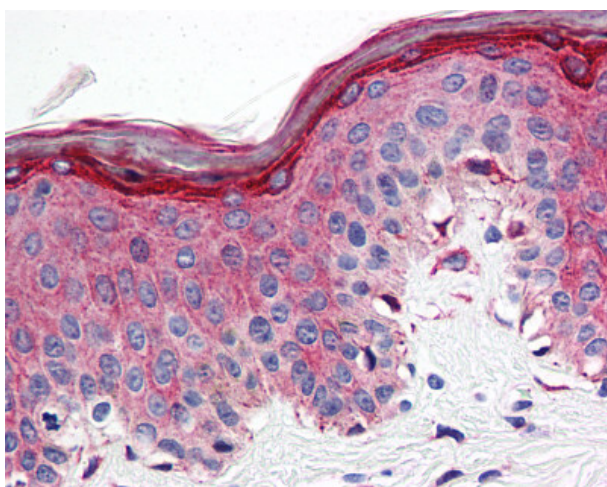
Product Type:	Primary Antibodies
Applications:	IHC
Recommended Dilution:	IHC-P (10 µg/ml)
Reactivity:	Human (Predicted: Bat)
Host:	Rabbit
Clonality:	Polyclonal
Immunogen:	HTR1E / 5-HT1E Receptor antibody was raised against synthetic 17 amino acid peptide from 3rd cytoplasmic domain of human 5HT1E Receptor. Percent identity with other species by BLAST analysis: Human, Chimpanzee, Gorilla, Orangutan, Gibbon, Monkey, Elephant, Panda, Bovine, Horse, Guinea pig, Turkey, Sparrow, Chicken, Lizard (100%); Bat, Opossum (94%); Stickleback, Zebrafish (88%).
Formulation:	PBS, 0.1% sodium azide.
Concentration:	lot specific
Purification:	Immunoaffinity purified
Conjugation:	Unconjugated
Storage:	Store at -20°C as received.
Stability:	Stable for 12 months from date of receipt.
Gene Name:	5-hydroxytryptamine receptor 1E
Database Link:	NP_000856 Entrez Gene 3354 Human P28566
Synonyms:	5-HT1E
Note:	Antigen retrieval requires Proteinase K treatment.
Protein Families:	Druggable Genome, GPCR, Transmembrane
Protein Pathways:	Neuroactive ligand-receptor interaction



[View online »](#)

Product images:

Anti-5HT1E Receptor antibody IHC of human kidney. Immunohistochemistry of formalin-fixed, paraffin-embedded tissue after heat-induced antigen retrieval.



Anti-5HT1E Receptor antibody IHC of human skin. Immunohistochemistry of formalin-fixed, paraffin-embedded tissue after heat-induced antigen retrieval.