

Product datasheet for **TA340893**

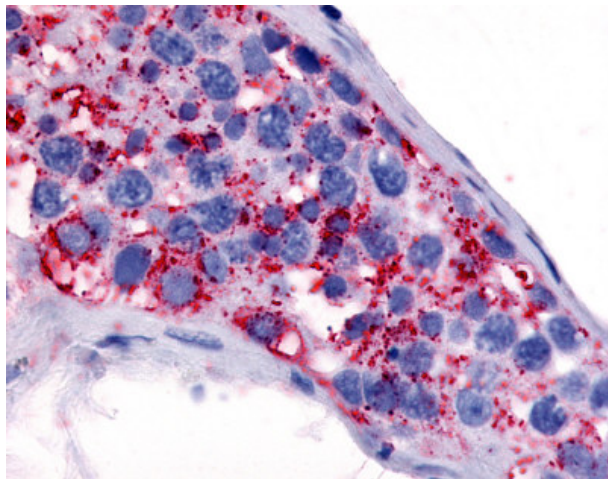
5HT1E Receptor (HTR1E) Rabbit Polyclonal Antibody

Product data:

Product Type:	Primary Antibodies
Applications:	IHC
Recommended Dilution:	IHC-P (16 - 24 µg/ml)
Reactivity:	Human (Predicted: Chicken)
Host:	Rabbit
Clonality:	Polyclonal
Immunogen:	HTR1E / 5-HT1E Receptor antibody was raised against synthetic 16 amino acid peptide from 3rd cytoplasmic domain of human 5HT1E Receptor. Percent identity with other species by BLAST analysis: Human, Chimpanzee, Gorilla, Orangutan, Gibbon, Monkey, Elephant, Bovine, Bat, Horse, Guinea pig (100%); Panda, Opossum, Turkey, Sparrow, Chicken (94%); Lizard (88%).
Formulation:	PBS, 0.1% sodium azide.
Purification:	Immunoaffinity purified
Conjugation:	Unconjugated
Storage:	Store at -20°C as received.
Stability:	Stable for 12 months from date of receipt.
Gene Name:	5-hydroxytryptamine receptor 1E
Database Link:	NP_000856 Entrez Gene 3354 Human P28566
Synonyms:	5-HT1E
Protein Families:	Druggable Genome, GPCR, Transmembrane
Protein Pathways:	Neuroactive ligand-receptor interaction



[View online »](#)

Product images:

Anti-5HT1E Receptor antibody IHC of human testis. Immunohistochemistry of formalin-fixed, paraffin-embedded tissue after heat-induced antigen retrieval.