

## Product datasheet for **TA340886**

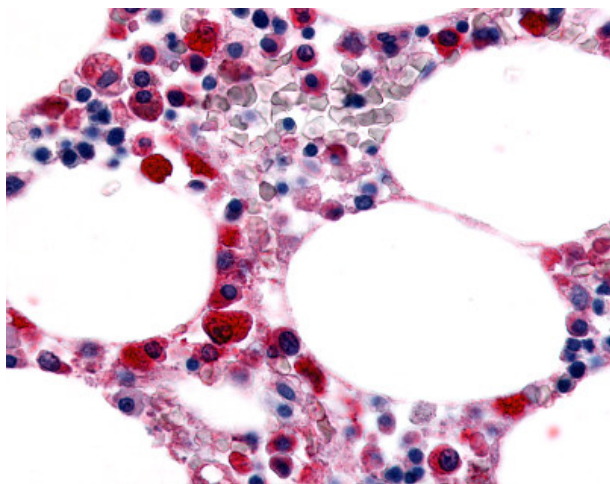
### ADGRE1 Rabbit Polyclonal Antibody

#### Product data:

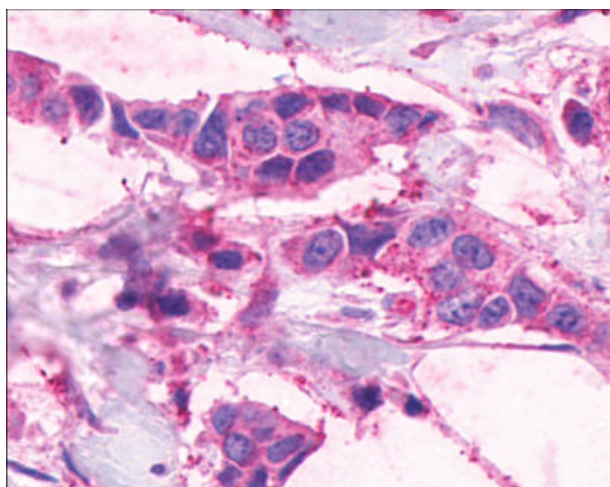
Product Type:	Primary Antibodies
Applications:	IHC
Recommended Dilution:	IHC-P (24 - 36 µg/ml)
Reactivity:	Human
Host:	Rabbit
Clonality:	Polyclonal
Immunogen:	EMR1 / F4/80 antibody was raised against synthetic 18 amino acid peptide from C-terminus of human EMR1. Percent identity with other species by BLAST analysis: Human (100%); Gorilla, Marmoset (89%); Gibbon (83%).
Formulation:	PBS, 0.1% sodium azide.
Concentration:	lot specific
Purification:	Immunoaffinity purified
Conjugation:	Unconjugated
Storage:	Store at -20°C as received.
Stability:	Stable for 12 months from date of receipt.
Gene Name:	adhesion G protein-coupled receptor E1
Database Link:	<a href="#">NP_001243181</a> <a href="#">Entrez Gene 2015 Human Q14246</a>
Synonyms:	EMR1; TM7LN3
Protein Families:	Druggable Genome, Transmembrane



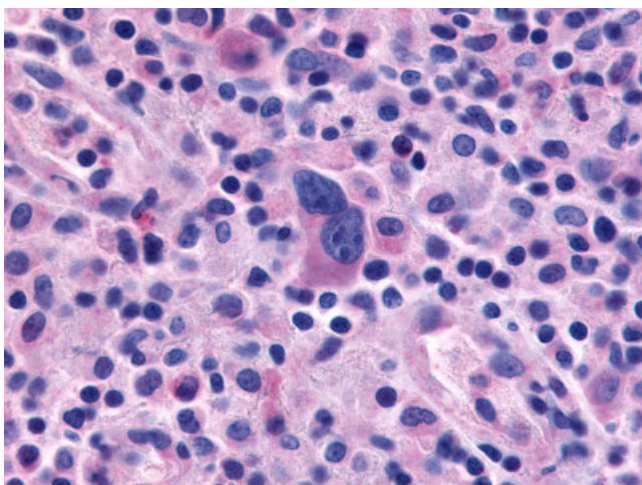
[View online »](#)

**Product images:**

Anti-EMR1 antibody IHC of human bone marrow. Immunohistochemistry of formalin-fixed, paraffin-embedded tissue after heat-induced antigen retrieval.



Anti-EMR1 / F4/80 antibody IHC of human Breast, Carcinoma. Immunohistochemistry of formalin-fixed, paraffin-embedded tissue after heat-induced antigen retrieval.



Anti-EMR1 / F4/80 antibody IHC of human Lymph Node, Hodgkins Lymphoma.  
Immunohistochemistry of formalin-fixed, paraffin-embedded tissue after heat-induced antigen retrieval.