

## Product datasheet for **TA340885**

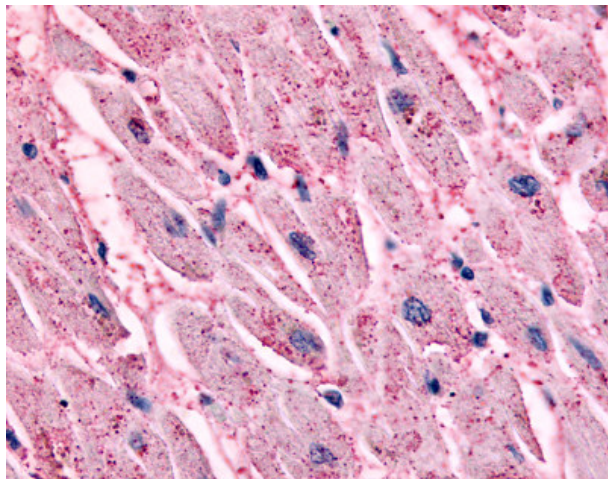
### beta 2 Adrenergic Receptor (ADRB2) Rabbit Polyclonal Antibody

#### Product data:

Product Type:	Primary Antibodies
Applications:	IHC
Recommended Dilution:	IHC-P (17 - 26 µg/ml)
Reactivity:	Human (Predicted: Zebrafish)
Host:	Rabbit
Clonality:	Polyclonal
Immunogen:	ADRB2 antibody was raised against synthetic 16 amino acid peptide from 5th transmembrane domain of human ADRB2. Percent identity with other species by BLAST analysis: Human, Chimpanzee, Gorilla, Monkey (100%); Pufferfish, Zebrafish, Stickleback (94%); Marmoset, Mouse, Rat, Hamster (88%); Bovine, Dog, Cat, Elephant, Pig, Guinea pig, Xenopus (81%).
Formulation:	PBS, 0.1% sodium azide.
Concentration:	lot specific
Purification:	Immunoaffinity purified
Conjugation:	Unconjugated
Storage:	Store at -20°C as received.
Stability:	Stable for 12 months from date of receipt.
Gene Name:	adrenoceptor beta 2
Database Link:	<a href="#">NP_000015</a> <a href="#">Entrez Gene 154 Human P07550</a>
Synonyms:	ADRB2R; ADRBR; B2AR; BAR; BETA2AR
Protein Families:	Druggable Genome, GPCR, Transmembrane
Protein Pathways:	Calcium signaling pathway, Endocytosis, Neuroactive ligand-receptor interaction



[View online »](#)

**Product images:**

Anti-ADRB2 antibody IHC of human heart, cardiac myocytes. Immunohistochemistry of formalin-fixed, paraffin-embedded tissue after heat-induced antigen retrieval.