

Product datasheet for **TA340882**

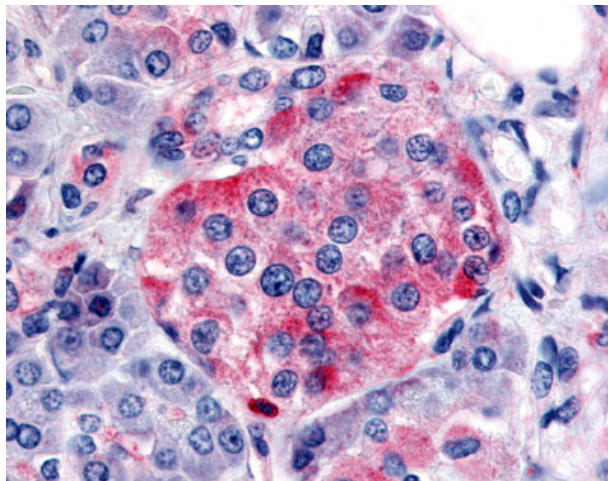
Somatostatin Receptor 1 (SSTR1) Rabbit Polyclonal Antibody

Product data:

Product Type:	Primary Antibodies
Applications:	IHC
Recommended Dilution:	IHC-P (10 µg/ml)
Reactivity:	Human
Host:	Rabbit
Clonality:	Polyclonal
Immunogen:	SSTR1 antibody was raised against synthetic 15 amino acid peptide from C-terminus of human SSTR1. Percent identity with other species by BLAST analysis: Human, Monkey, Mouse, Rat, Sheep, Bovine, Bat, Dog, Goat, Hamster, Elephant, Panda, Horse, Rabbit, Pig (100%); Turkey, Chicken (87%); Zebrafish (80%).
Formulation:	PBS, 0.1% sodium azide.
Concentration:	lot specific
Purification:	Immunoaffinity purified
Conjugation:	Unconjugated
Storage:	Store at -20°C as received.
Stability:	Stable for 12 months from date of receipt.
Gene Name:	somatostatin receptor 1
Database Link:	NP_001040 Entrez Gene 6751 Human P30872
Synonyms:	SRIF-2; SS-1-R; SS1-R; SS1R
Protein Families:	Druggable Genome, GPCR, Transmembrane
Protein Pathways:	Neuroactive ligand-receptor interaction



[View online »](#)

Product images:

Anti-SSTR1 antibody IHC of human pancreas, islet. Immunohistochemistry of formalin-fixed, paraffin-embedded tissue after heat-induced antigen retrieval.