

Product datasheet for **TA340881**

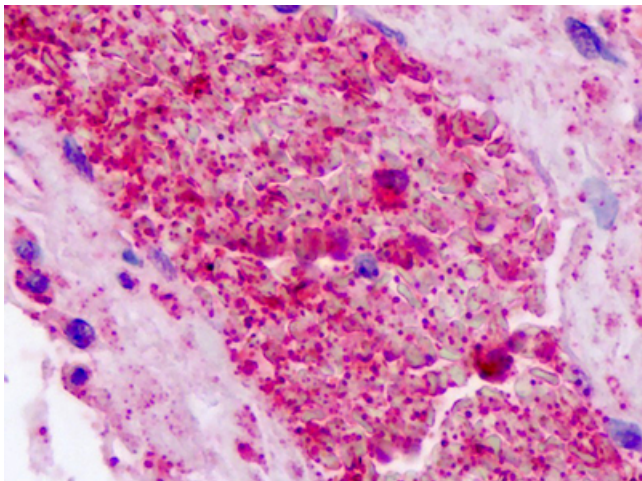
Proteinase Activated Receptor 3 (F2RL2) Rabbit Polyclonal Antibody

Product data:

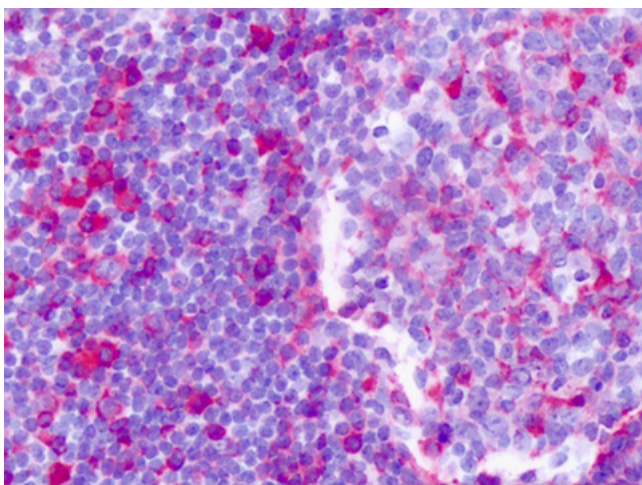
Product Type:	Primary Antibodies
Applications:	IHC
Recommended Dilution:	IHC-P (2.8 - 4.6 µg/ml)
Reactivity:	Human (Predicted: Monkey, Bovine)
Host:	Rabbit
Clonality:	Polyclonal
Immunogen:	F2RL2 / PAR3 antibody was raised against synthetic 19 amino acid peptide from internal region of human F2RL2. Percent identity with other species by BLAST analysis: Human, Gorilla, Marmoset (100%); Monkey, Bovine, Panda (95%); Gibbon, Dog, Elephant, Pig (89%); Rat, Hamster (84%).
Formulation:	PBS, 0.1% sodium azide.
Concentration:	lot specific
Purification:	Immunoaffinity purified
Conjugation:	Unconjugated
Storage:	Store at -20°C as received.
Stability:	Stable for 12 months from date of receipt.
Gene Name:	coagulation factor II thrombin receptor like 2
Database Link:	NP_004092 Entrez Gene 707260 Monkey Entrez Gene 2151 Human O00254
Synonyms:	PAR-3; PAR3
Protein Families:	Druggable Genome, GPCR, Transmembrane
Protein Pathways:	Neuroactive ligand-receptor interaction



[View online »](#)

Product images:

Anti-F2RL2 / PAR3 antibody IHC of human platelets. Immunohistochemistry of formalin-fixed, paraffin-embedded tissue after heat-induced antigen retrieval. Antibody dilution 2.8-4.6 ug/ml.



Anti-F2RL2 / PAR3 antibody IHC of human tonsil. Immunohistochemistry of formalin-fixed, paraffin-embedded tissue after heat-induced antigen retrieval. Antibody dilution 2.8-4.6 ug/ml.