

Product datasheet for **TA340858**

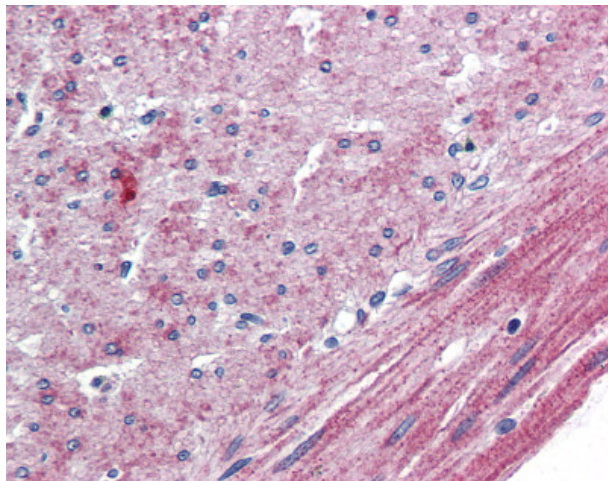
ETL (ADGRL4) Rabbit Polyclonal Antibody

Product data:

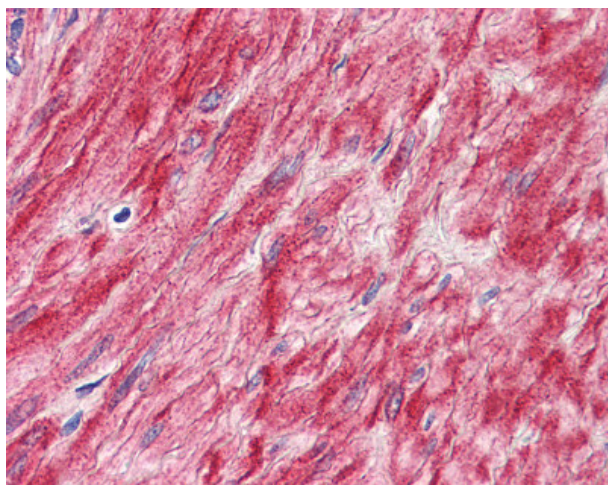
Product Type:	Primary Antibodies
Applications:	IHC
Recommended Dilution:	IHC-P (10 µg/ml)
Reactivity:	Human (Predicted: Monkey, Horse)
Host:	Rabbit
Clonality:	Polyclonal
Immunogen:	ELTD1 antibody was raised against synthetic 19 amino acid peptide from N-terminal extracellular domain of human ELTD1. Percent identity with other species by BLAST analysis: Human (100%); Gorilla, Gibbon, Monkey, Horse (95%); Marmoset, Rabbit (89%); Elephant (84%).
Formulation:	PBS, 0.1% sodium azide.
Concentration:	lot specific
Purification:	Immunoaffinity purified
Conjugation:	Unconjugated
Storage:	Store at -20°C as received.
Stability:	Stable for 12 months from date of receipt.
Gene Name:	adhesion G protein-coupled receptor L4
Database Link:	NP_071442 Entrez Gene 711589 Monkey Entrez Gene 64123 Human Q9HBW9
Synonyms:	ELTD1; ETL; KPG_003
Note:	Antigen retrieval requires Proteinase K treatment.
Protein Families:	Druggable Genome, GPCR, Transmembrane



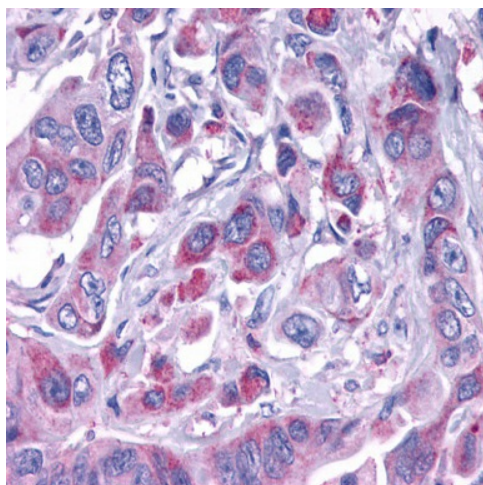
[View online »](#)

Product images:

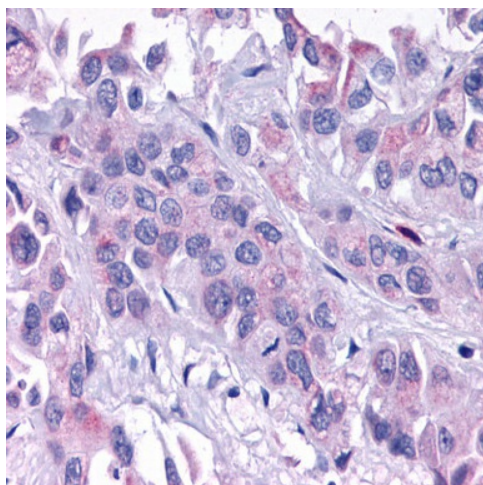
Anti-ELTD1 antibody IHC of human colon, smooth muscle. Immunohistochemistry of formalin-fixed, paraffin-embedded tissue after heat-induced antigen retrieval.



Anti-ELTD1 antibody IHC of human prostate, smooth muscle. Immunohistochemistry of formalin-fixed, paraffin-embedded tissue after heat-induced antigen retrieval.



Anti-ELTD1 antibody IHC of human Colon, Carcinoma. Immunohistochemistry of formalin-fixed, paraffin-embedded tissue after heat-induced antigen retrieval.



Anti-ELTD1 antibody IHC of human Pancreas, Carcinoma. Immunohistochemistry of formalin-fixed, paraffin-embedded tissue after heat-induced antigen retrieval.