

Product datasheet for **TA340857**

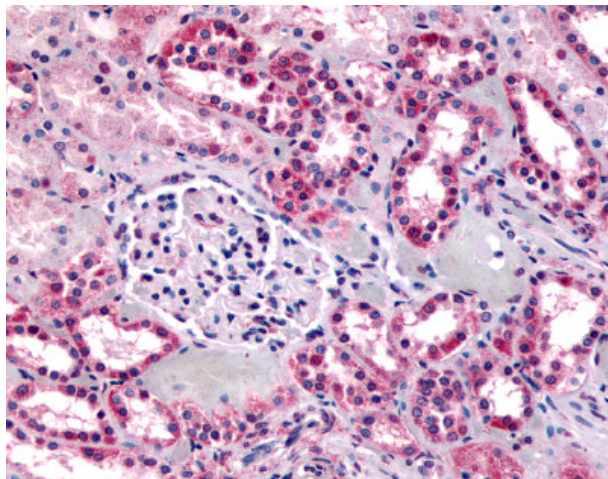
GPR91 (SUCNR1) Rabbit Polyclonal Antibody

Product data:

Product Type:	Primary Antibodies
Applications:	IHC
Recommended Dilution:	IHC-P (16 µg/ml)
Reactivity:	Human (Predicted: Monkey)
Host:	Rabbit
Clonality:	Polyclonal
Immunogen:	SUCNR1 / GPR91 antibody was raised against synthetic 18 amino acid peptide from C-terminus of human GPR91. Percent identity with other species by BLAST analysis: Human, Monkey (100%); Gorilla, Gibbon, Marmoset (94%).
Formulation:	PBS, 0.1% sodium azide.
Concentration:	lot specific
Purification:	Immunoaffinity purified
Conjugation:	Unconjugated
Storage:	Store at -20°C as received.
Stability:	Stable for 12 months from date of receipt.
Gene Name:	succinate receptor 1
Database Link:	NP_149039 Entrez Gene 711776 Monkey Entrez Gene 56670 Human Q9BXA5
Synonyms:	GPR91
Protein Families:	Druggable Genome, GPCR, Transmembrane



[View online »](#)

Product images:

Anti-GPR91 antibody IHC of human kidney. Immunohistochemistry of formalin-fixed, paraffin-embedded tissue after heat-induced antigen retrieval.