

## Product datasheet for **TA340853**

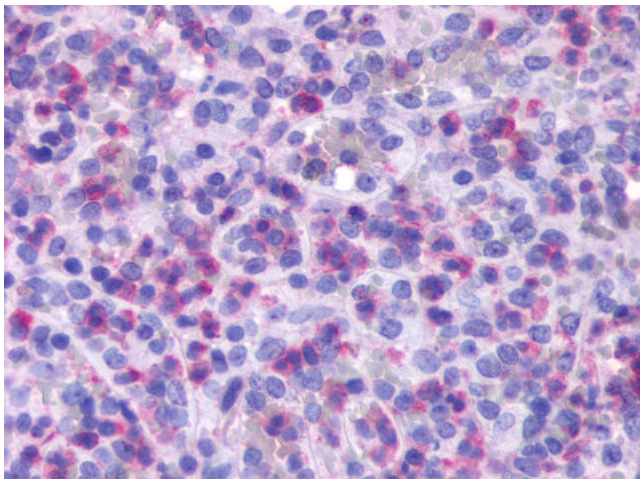
### FPR1 Rabbit Polyclonal Antibody

#### Product data:

Product Type:	Primary Antibodies
Applications:	IHC
Recommended Dilution:	IHC-P (5 - 10 µg/ml)
Reactivity:	Human
Host:	Rabbit
Clonality:	Polyclonal
Immunogen:	FPR1 / FPR antibody was raised against synthetic 18 amino acid peptide from 3rd extracellular domain of human FPR1. Percent identity with other species by BLAST analysis: Human, Chimpanzee, Gorilla (100%); Orangutan (94%); Gibbon (83%).
Formulation:	PBS, 0.1% sodium azide.
Concentration:	lot specific
Purification:	Immunoaffinity purified
Conjugation:	Unconjugated
Storage:	Store at -20°C as received.
Stability:	Stable for 12 months from date of receipt.
Gene Name:	formyl peptide receptor 1
Database Link:	<a href="#">NP_002020</a> <a href="#">Entrez Gene 2357 Human</a> <a href="#">P21462</a>
Synonyms:	FMLP; FPR
Protein Families:	Druggable Genome, GPCR, Transmembrane
Protein Pathways:	Neuroactive ligand-receptor interaction



[View online »](#)

**Product images:**

Anti-FPR1 antibody IHC of human spleen, red pulp. Immunohistochemistry of formalin-fixed, paraffin-embedded tissue after heat-induced antigen retrieval.