

## Product datasheet for **TA340847**

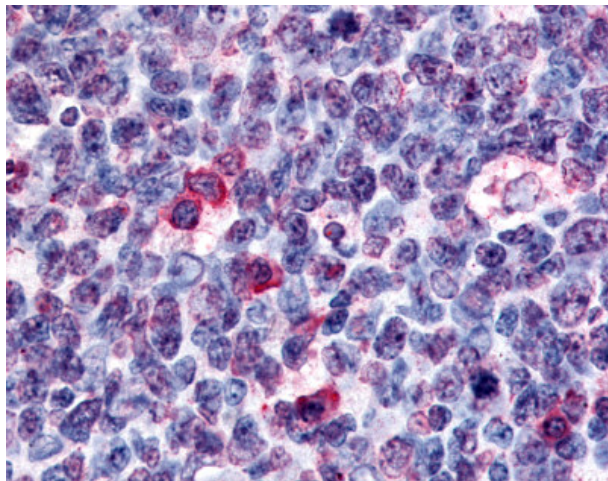
### GPR146 Rabbit Polyclonal Antibody

#### Product data:

Product Type:	Primary Antibodies
Applications:	IHC
Recommended Dilution:	IHC-P (25 µg/ml)
Reactivity:	Human (Predicted: Monkey, Bovine, Dog, Horse)
Host:	Rabbit
Clonality:	Polyclonal
Immunogen:	GPR146 antibody was raised against synthetic 19 amino acid peptide from 2nd cytoplasmic domain of human GPR146. Percent identity with other species by BLAST analysis: Human, Gorilla, Gibbon, Monkey, Mouse, Rat, Hamster (100%); Marmoset, Dog, Bovine, Elephant, Horse (95%); Bat, Panda, Pig, Opossum, Turkey, Chicken, Platypus, Pufferfish, Zebrafish, Stickleback (89%).
Formulation:	PBS, 0.1% sodium azide.
Concentration:	lot specific
Purification:	Immunoaffinity purified
Conjugation:	Unconjugated
Storage:	Store at -20°C as received.
Stability:	Stable for 12 months from date of receipt.
Gene Name:	G protein-coupled receptor 146
Database Link:	<a href="#">NP_612454</a> <a href="#">Entrez Gene 491603 Dog</a> <a href="#">Entrez Gene 696750 Monkey</a> <a href="#">Entrez Gene 115330 Human</a> <a href="#">Q96CH1</a>
Synonyms:	PGR8
Protein Families:	Druggable Genome, GPCR, Transmembrane



[View online »](#)

**Product images:**

Anti-GPR146 antibody IHC of human tonsil germinal center. Immunohistochemistry of formalin-fixed, paraffin-embedded tissue after heat-induced antigen retrieval.