

Product datasheet for **TA340843**

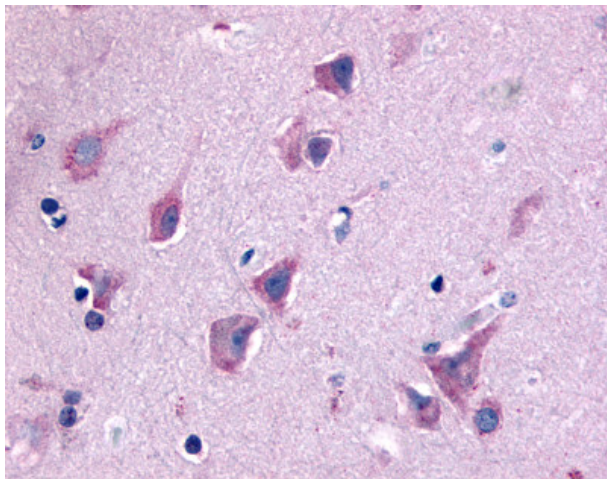
GPR103 (QRFPR) Rabbit Polyclonal Antibody

Product data:

Product Type:	Primary Antibodies
Applications:	IHC
Recommended Dilution:	IHC-P (8 µg/ml)
Reactivity:	Human (Predicted: Monkey, Mouse, Rat, Dog)
Host:	Rabbit
Clonality:	Polyclonal
Immunogen:	QRFPR / GPR103 antibody was raised against synthetic 20 amino acid peptide from N-Terminus of human QRFPR / GPR103. Percent identity with other species by BLAST analysis: Human, Gorilla, Gibbon, Marmoset, Bovine, Horse, Rabbit, Pig (100%); Monkey, Rat, Dog, Elephant (95%); Mouse, Panda (90%); Bat, Turkey, Zebra finch, Chicken, Platypus, Xenopus (85%); Opossum (80%).
Formulation:	PBS, 0.1% sodium azide.
Concentration:	lot specific
Purification:	Immunoaffinity purified
Conjugation:	Unconjugated
Storage:	Store at -20°C as received.
Stability:	Stable for 12 months from date of receipt.
Gene Name:	pyroglutamylated RFamide peptide receptor
Database Link:	NP_937822 Entrez Gene 229214 Mouse Entrez Gene 310327 Rat Entrez Gene 483846 Dog Entrez Gene 106998483 Monkey Entrez Gene 84109 Human Q96P65
Synonyms:	AQ27; GPR103; SP9155
Protein Families:	Druggable Genome, GPCR, Transmembrane



[View online »](#)

Product images:

Anti-QRFPR / GPR103 antibody IHC of human brain, neurons and glia. Immunohistochemistry of formalin-fixed, paraffin-embedded tissue after heat-induced antigen retrieval.