

Product datasheet for **TA340838**

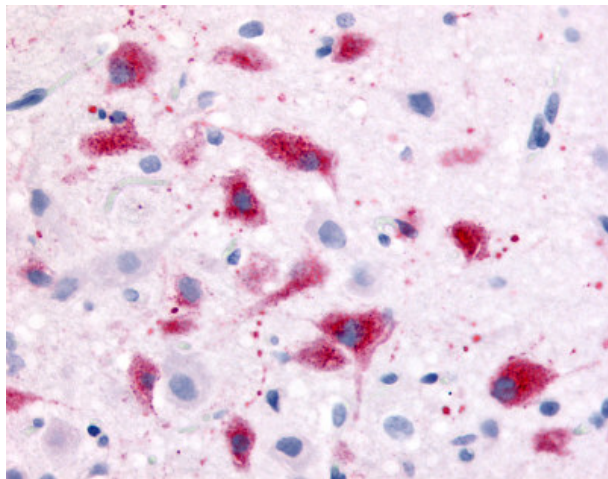
CRF1 (CRHR1) Rabbit Polyclonal Antibody

Product data:

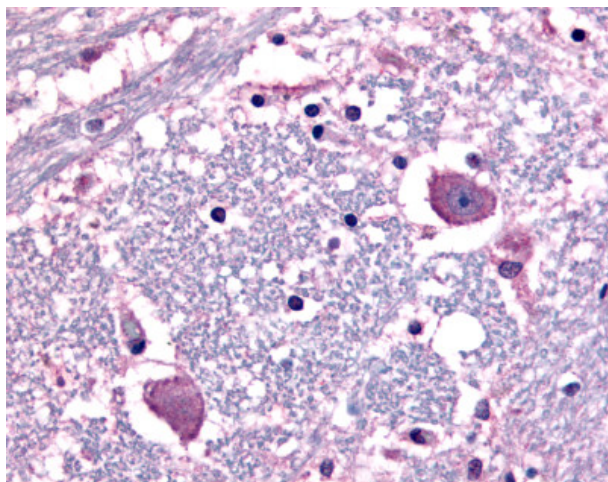
Product Type:	Primary Antibodies
Applications:	IHC
Recommended Dilution:	IHC-P (21 µg/ml)
Reactivity:	Human (Predicted: Mouse, Hamster, Horse)
Host:	Rabbit
Clonality:	Polyclonal
Immunogen:	CRFR1 / CRHR1 antibody was raised against synthetic 18 amino acid peptide from N-terminal extracellular domain of human CRF1. Percent identity with other species by BLAST analysis: Human, Gorilla, Gibbon, Monkey, Marmoset, Rat (100%); Mouse, Hamster, Elephant, Horse (94%); Dog, Bat, Bovine, Panda, Pig, Lizard, Zebrafish (89%); Opossum, Turkey, Frog, Trout (83%).
Formulation:	PBS, 0.1% sodium azide.
Concentration:	lot specific
Purification:	Immunoaffinity purified
Conjugation:	Unconjugated
Storage:	Store at -20°C as received.
Stability:	Stable for 12 months from date of receipt.
Gene Name:	corticotropin releasing hormone receptor 1
Database Link:	NP_004373 Entrez Gene 12921 Mouse Entrez Gene 1394 Human P34998
Synonyms:	CRF-R; CRF-R-1; CRF-R1; CRF1; CRFR-1; CRFR1; CRH-R-1; CRH-R1; CRHR; CRHR1L
Protein Families:	Druggable Genome, GPCR, Transmembrane
Protein Pathways:	Long-term depression, Neuroactive ligand-receptor interaction



[View online »](#)

Product images:

Anti-CRF1 antibody IHC of rat hypothalamus. Immunohistochemistry of formalin-fixed, paraffin-embedded tissue after heat-induced antigen retrieval.



Anti-CRF1 antibody IHC of human human brain, neurons and glia. Immunohistochemistry of formalin-fixed, paraffin-embedded tissue after heat-induced antigen retrieval.