

Product datasheet for **TA340836**

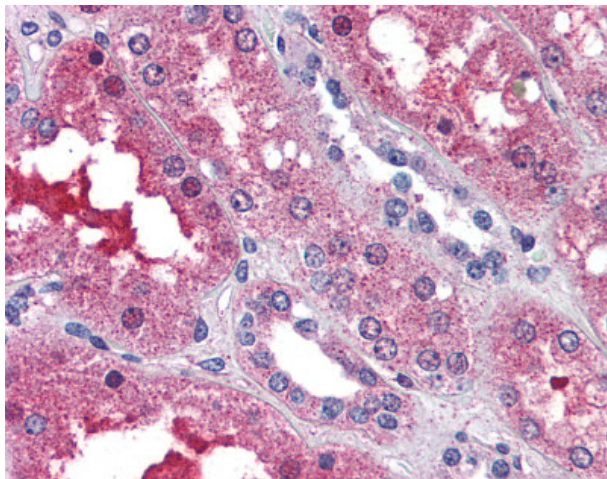
EDG3 (S1PR3) Rabbit Polyclonal Antibody

Product data:

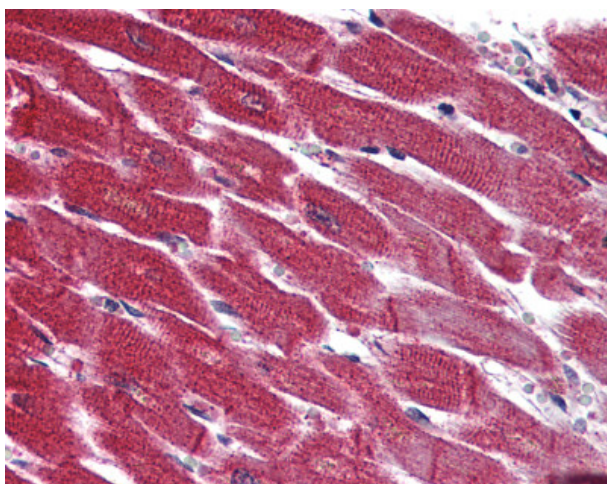
Product Type:	Primary Antibodies
Applications:	IHC
Recommended Dilution:	IHC-P (5 µg/ml)
Reactivity:	Human (Predicted: Monkey)
Host:	Rabbit
Clonality:	Polyclonal
Immunogen:	S1PR3 / EDG3 / S1P3 antibody was raised against synthetic 19 amino acid peptide from N-Terminus of human EDG3 / S1P3. Percent identity with other species by BLAST analysis: Human, Gorilla (100%); Gibbon, Monkey, Marmoset (95%).
Formulation:	PBS, 0.1% sodium azide.
Concentration:	lot specific
Purification:	Immunoaffinity purified
Conjugation:	Unconjugated
Storage:	Store at -20°C as received.
Stability:	Stable for 12 months from date of receipt.
Gene Name:	sphingosine-1-phosphate receptor 3
Database Link:	NP_005217 Entrez Gene 700903 Monkey Entrez Gene 1903 Human Q99500
Synonyms:	EDG-3; EDG3; LPB3; S1P3
Protein Families:	Druggable Genome, GPCR, Transmembrane
Protein Pathways:	Neuroactive ligand-receptor interaction



[View online »](#)

Product images:

Anti-EDG3 / S1P3 antibody IHC of human kidney. Immunohistochemistry of formalin-fixed, paraffin-embedded tissue after heat-induced antigen retrieval.



Anti-EDG3 / S1P3 antibody IHC of human heart. Immunohistochemistry of formalin-fixed, paraffin-embedded tissue after heat-induced antigen retrieval.