

Product datasheet for **TA340817**

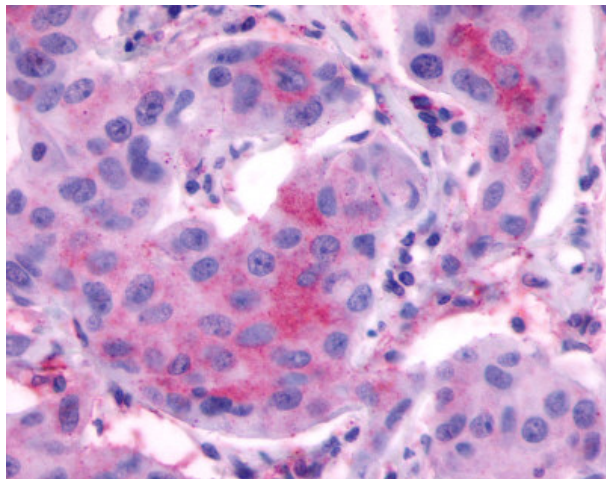
LHCGR Rabbit Polyclonal Antibody

Product data:

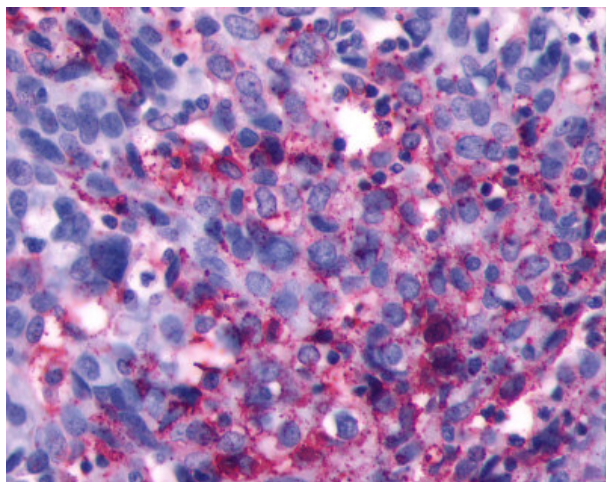
Product Type:	Primary Antibodies
Applications:	IHC
Recommended Dilution:	IHC-P (5 µg/ml)
Reactivity:	Human (Predicted: Monkey, Rat, Dog)
Host:	Rabbit
Clonality:	Polyclonal
Immunogen:	LHCGR / LHR / LH Receptor antibody was raised against synthetic 19 amino acid peptide from C-terminus of human hCG receptor. Percent identity with other species by BLAST analysis: Human, Gorilla, Gibbon (100%); Monkey, Marmoset, Rat, Dog, Panda (95%); Bovine, Bat, Rabbit, Horse (89%); Ferret (84%).
Formulation:	PBS, 0.1% sodium azide.
Concentration:	lot specific
Purification:	Immunoaffinity purified
Conjugation:	Unconjugated
Storage:	Store at -20°C as received.
Stability:	Stable for 12 months from date of receipt.
Gene Name:	luteinizing hormone/choriogonadotropin receptor
Database Link:	NP_000224 Entrez Gene 25477 Rat Entrez Gene 481365 Dog Entrez Gene 715999 Monkey Entrez Gene 3973 Human P22888
Synonyms:	CG-R; CGR; HHG; LCGR; LGR2; LH; LHR; LHRHR; LSH-R; ULG5
Protein Families:	Druggable Genome, Transmembrane
Protein Pathways:	Calcium signaling pathway, Neuroactive ligand-receptor interaction



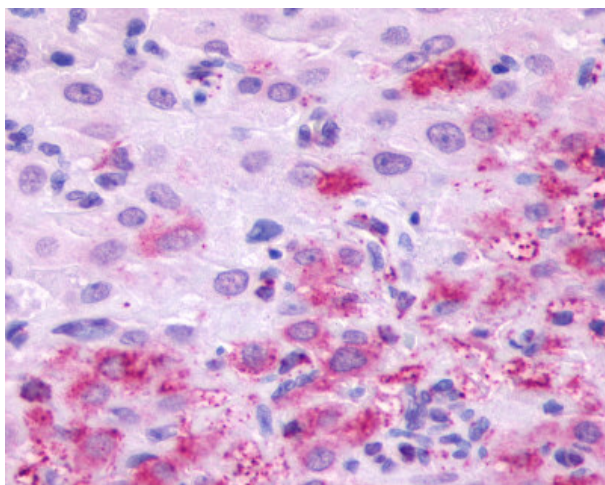
[View online »](#)

Product images:

Anti-LHCGR / LHR / LH Receptor antibody IHC of human Breast, Carcinoma.
Immunohistochemistry of formalin-fixed, paraffin-embedded tissue after heat-induced antigen retrieval.



Anti-LHCGR / LHR / LH Receptor antibody IHC of human Ovary, Carcinoma.
Immunohistochemistry of formalin-fixed, paraffin-embedded tissue after heat-induced antigen retrieval.



Anti-hCG receptor antibody IHC of human ovary, corpus luteum. Immunohistochemistry of formalin-fixed, paraffin-embedded tissue after heat-induced antigen retrieval.