

Product datasheet for **TA340816**

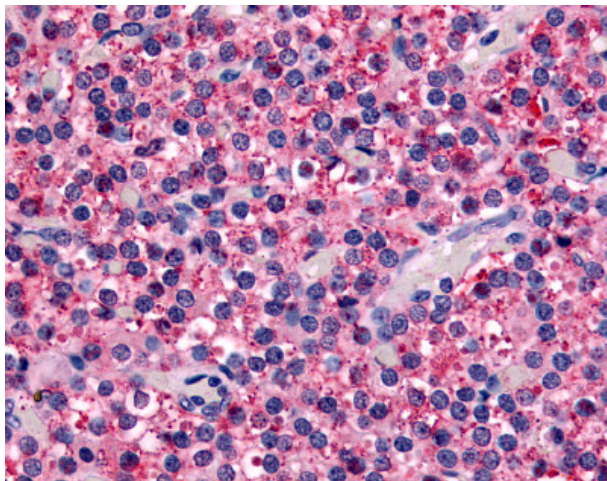
Calcium Sensing Receptor (CASR) Rabbit Polyclonal Antibody

Product data:

Product Type:	Primary Antibodies
Applications:	IHC
Recommended Dilution:	IHC-P (6 - 15 µg/ml)
Reactivity:	Human (Predicted: Monkey, Rat, Bat, Horse, Rabbit)
Host:	Rabbit
Clonality:	Polyclonal
Immunogen:	CASR/Calcium Sensing Receptor antibody was raised against synthetic 18 amino acid peptide from N-terminal extracellular domain of human CASR. Percent identity with other species by BLAST analysis: Human, Gorilla, Gibbon, Monkey, Bovine (100%); Marmoset, Rat, Bat, Horse, Rabbit (94%); Mouse, Dog, Hamster, Pig (89%); Elephant, Panda (83%).
Formulation:	PBS, 0.1% sodium azide.
Concentration:	lot specific
Purification:	Immunoaffinity purified
Conjugation:	Unconjugated
Storage:	Store at -20°C as received.
Stability:	Stable for 12 months from date of receipt.
Gene Name:	calcium sensing receptor
Database Link:	NP_000379 Entrez Gene 24247 Rat Entrez Gene 714441 Monkey Entrez Gene 846 Human P41180
Synonyms:	CAR; EIG8; FHH; FIH; GPRC2A; HHC; HHC1; HYPOC1; NSHPT; PCAR1
Protein Families:	Druggable Genome, GPCR, Transmembrane



[View online »](#)

Product images:

Anti-CASR antibody IHC of human parathyroid. Immunohistochemistry of formalin-fixed, paraffin-embedded tissue after heat-induced antigen retrieval.