

Product datasheet for **TA340815**

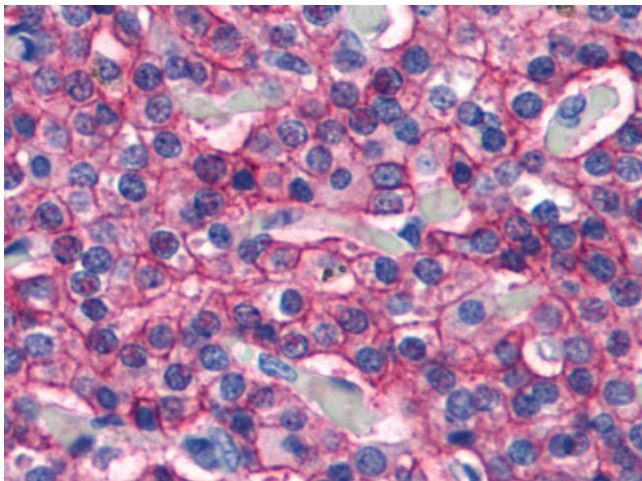
Calcium Sensing Receptor (CASR) Rabbit Polyclonal Antibody

Product data:

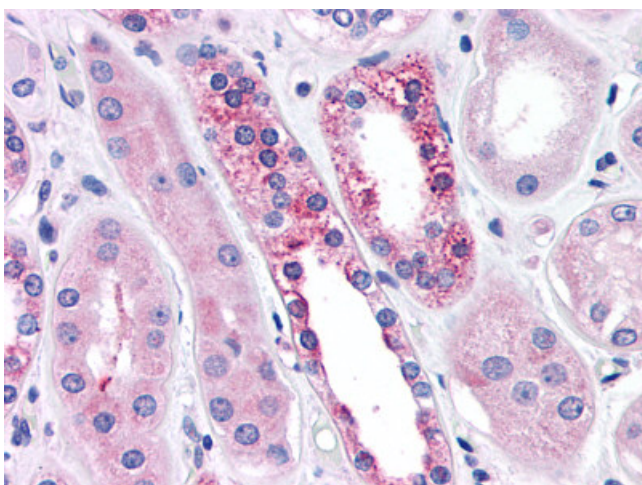
Product Type:	Primary Antibodies
Applications:	IHC
Recommended Dilution:	IHC-P (4 - 8 µg/ml)
Reactivity:	Human (Predicted: Xenopus)
Host:	Rabbit
Clonality:	Polyclonal
Immunogen:	CASR/Calcium Sensing Receptor antibody was raised against synthetic 17 amino acid peptide from N-terminal extracellular domain of human CASR. Percent identity with other species by BLAST analysis: Human, Gorilla, Gibbon, Monkey, Marmoset, Mouse, Rat, Dog, Bat, Bovine, Hamster, Elephant, Panda, Horse, Rabbit, Pig, Opossum, Turkey, Chicken, Platypus (100%); Xenopus (94%).
Formulation:	PBS, 0.1% sodium azide.
Concentration:	lot specific
Purification:	Immunoaffinity purified
Conjugation:	Unconjugated
Storage:	Store at -20°C as received.
Stability:	Stable for 12 months from date of receipt.
Gene Name:	calcium sensing receptor
Database Link:	NP_000379 Entrez Gene 846 Human P41180
Synonyms:	CAR; EIG8; FHH; FIH; GPRC2A; HHC; HHC1; HYPOC1; NSHPT; PCAR1
Protein Families:	Druggable Genome, GPCR, Transmembrane



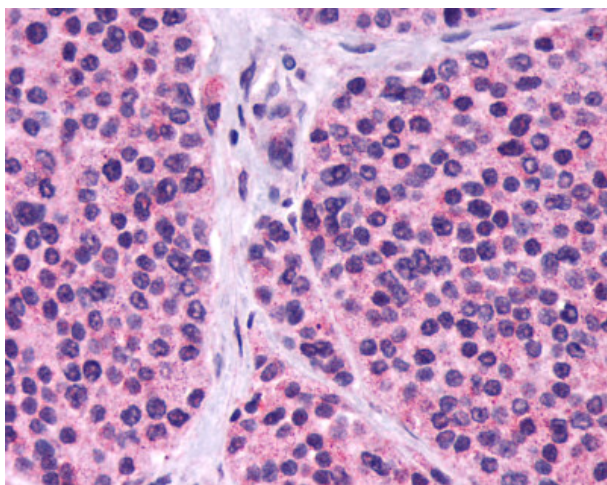
[View online »](#)

Product images:

Anti-CASR antibody IHC of human parathyroid. Immunohistochemistry of formalin-fixed, paraffin-embedded tissue after heat-induced antigen retrieval.



Anti-CASR/Calcium Sensing Receptor antibody IHC of human kidney, diabetes. Immunohistochemistry of formalin-fixed, paraffin-embedded tissue after heat-induced antigen retrieval.



Anti-CASR/Calcium Sensing Receptor antibody
IHC of human Thyroid, Medullary Carcinoma.
Immunohistochemistry of formalin-fixed,
paraffin-embedded tissue after heat-induced
antigen retrieval.