

Product datasheet for **TA340814**

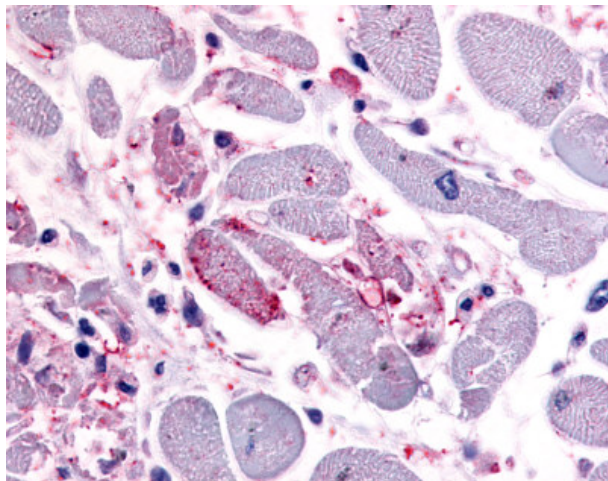
CXCR4 Rabbit Polyclonal Antibody

Product data:

Product Type:	Primary Antibodies
Applications:	IHC
Recommended Dilution:	IHC-P (1.6 µg/ml)
Reactivity:	Human (Predicted: Chicken)
Host:	Rabbit
Clonality:	Polyclonal
Immunogen:	CXCR4 antibody was raised against synthetic 17 amino acid peptide from C-terminus of human CXCR4. Percent identity with other species by BLAST analysis: Human, Chimpanzee, Gorilla, Orangutan, Gibbon, Baboon, Monkey, Marmoset, Tamarin, Mouse, Rat, Bat, Bovine, Dog, Cat, Hamster, Panda, Rabbit, Horse, Pig, Opossum, Lizard (100%); Elephant, Turkey, Chicken (94%).
Formulation:	PBS, 0.1% sodium azide.
Purification:	Immunoaffinity purified
Conjugation:	Unconjugated
Storage:	Store at -20°C as received.
Stability:	Stable for 12 months from date of receipt.
Gene Name:	C-X-C motif chemokine receptor 4
Database Link:	NP_003458 Entrez Gene 7852 Human P61073
Synonyms:	CD184; D2S201E; FB22; HM89; HSY3RR; LAP-3; LAP3; LCR1; LESTR; NPY3R; NPYR; NPYRL; NPYY3R; WHIM
Protein Families:	Druggable Genome, ES Cell Differentiation/IPS, GPCR, Transmembrane
Protein Pathways:	Axon guidance, Chemokine signaling pathway, Cytokine-cytokine receptor interaction, Endocytosis, Leukocyte transendothelial migration



[View online »](#)

Product images:

Anti-CXCR4 antibody IHC of human heart. Immunohistochemistry of formalin-fixed, paraffin-embedded tissue after heat-induced antigen retrieval.