

Product datasheet for **TA340807**

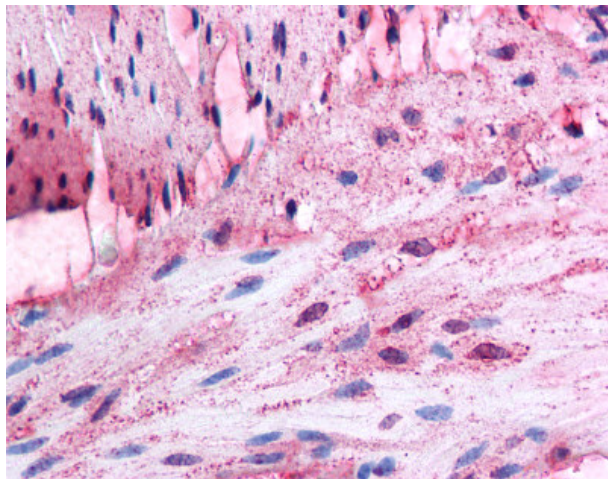
alpha 1d Adrenergic Receptor (ADRA1D) Rabbit Polyclonal Antibody

Product data:

Product Type:	Primary Antibodies
Applications:	IHC
Recommended Dilution:	IHC-P (2.5 µg/ml)
Reactivity:	Human (Predicted: Mouse, Rat, Bovine, Hamster, Rabbit)
Host:	Rabbit
Clonality:	Polyclonal
Immunogen:	ADRA1D antibody was raised against synthetic 18 amino acid peptide from 2nd extracellular domain of human ADRA1D. Percent identity with other species by BLAST analysis: Human, Gorilla, Monkey, Marmoset, Dog, Panda, Horse, Pig, Guinea pig (100%); Mouse, Rat, Bovine, Hamster, Rabbit, Opossum (94%); Bat (89%).
Formulation:	PBS, 0.1% sodium azide.
Concentration:	lot specific
Purification:	Immunoaffinity purified
Conjugation:	Unconjugated
Storage:	Store at -20°C as received.
Stability:	Stable for 12 months from date of receipt.
Gene Name:	adrenoceptor alpha 1D
Database Link:	NP_000669 Entrez Gene 11550 Mouse Entrez Gene 29413 Rat Entrez Gene 146 Human P25100
Synonyms:	ADRA1; ADRA1A; ADRA1R; ALPHA1; DAR; dj779E11.2
Protein Families:	Druggable Genome, GPCR, Transmembrane
Protein Pathways:	Calcium signaling pathway, Neuroactive ligand-receptor interaction, Vascular smooth muscle contraction



[View online »](#)

Product images:

Anti-ADRA1D antibody IHC of human colon, smooth muscle. Immunohistochemistry of formalin-fixed, paraffin-embedded tissue after heat-induced antigen retrieval.