

## Product datasheet for **TA340804**

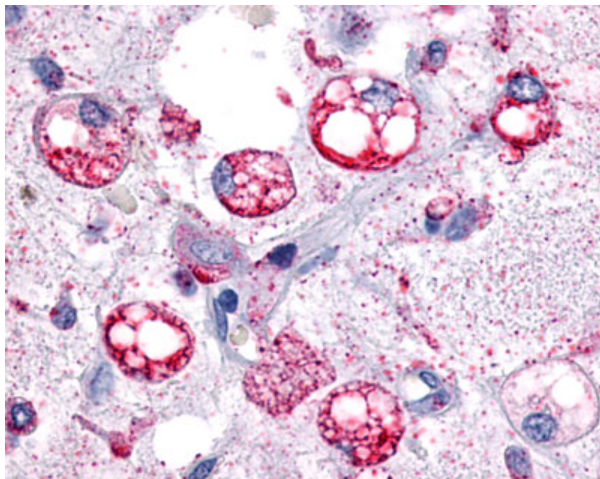
### GPR34 Rabbit Polyclonal Antibody

#### Product data:

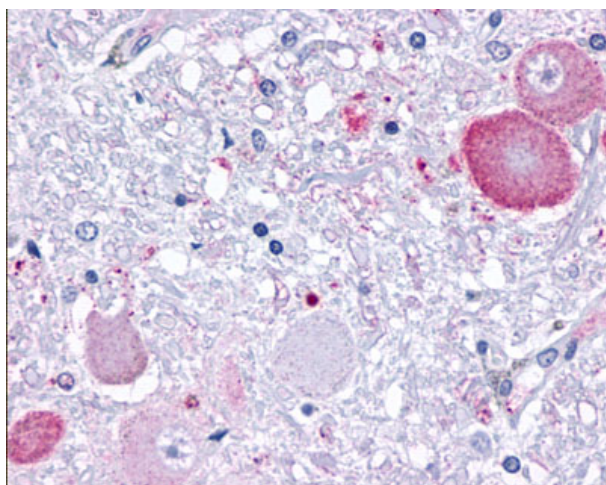
Product Type:	Primary Antibodies
Applications:	IHC
Recommended Dilution:	IHC-P (1 µg/ml)
Reactivity:	Human (Predicted: Monkey, Mouse, Rat, Guinea Pig)
Host:	Rabbit
Clonality:	Polyclonal
Immunogen:	GPR34 antibody was raised against synthetic 17 amino acid peptide from 2nd cytoplasmic domain of human GPR34. Percent identity with other species by BLAST analysis: Human, Chimpanzee, Gorilla, Gibbon, Monkey, Bovine, Horse (100%); Marmoset, Mouse, Rat, Elephant, Guinea pig (94%); Panda (88%); Bat, Opossum (82%).
Formulation:	PBS, 0.1% sodium azide.
Concentration:	lot specific
Purification:	Immunoaffinity purified
Conjugation:	Unconjugated
Storage:	Store at -20°C as received.
Stability:	Stable for 12 months from date of receipt.
Gene Name:	G protein-coupled receptor 34
Database Link:	<a href="#">NP_001028685</a> <a href="#">Entrez Gene 23890 Mouse</a> <a href="#">Entrez Gene 554353 Rat</a> <a href="#">Entrez Gene 700887 Monkey</a> <a href="#">Entrez Gene 2857 Human</a> <a href="#">Q9UPC5</a>
Synonyms:	G protein-coupled receptor 34; OTTHUMP00000023148; OTTHUMP00000023149
Protein Families:	Druggable Genome, GPCR, Transmembrane



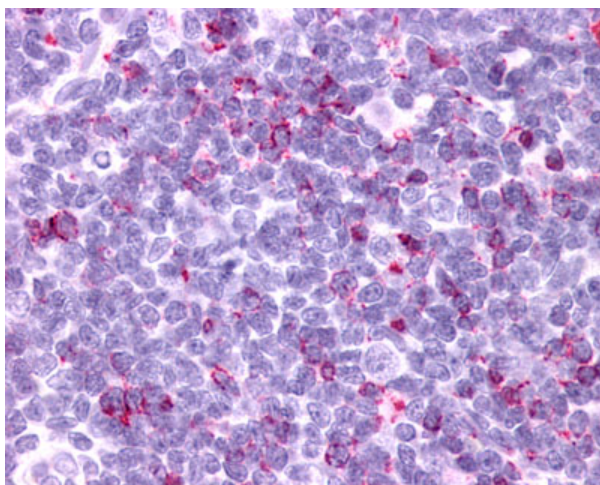
[View online »](#)

**Product images:**

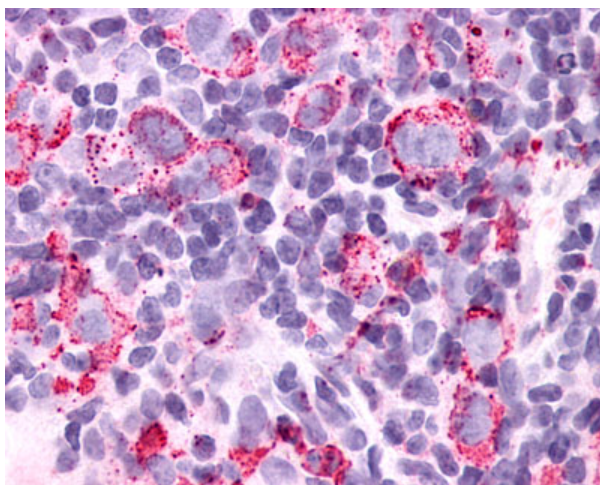
Anti-GPR34 antibody IHC of human Soft Tissue, Liposarcoma. Immunohistochemistry of formalin-fixed, paraffin-embedded tissue after heat-induced antigen retrieval.



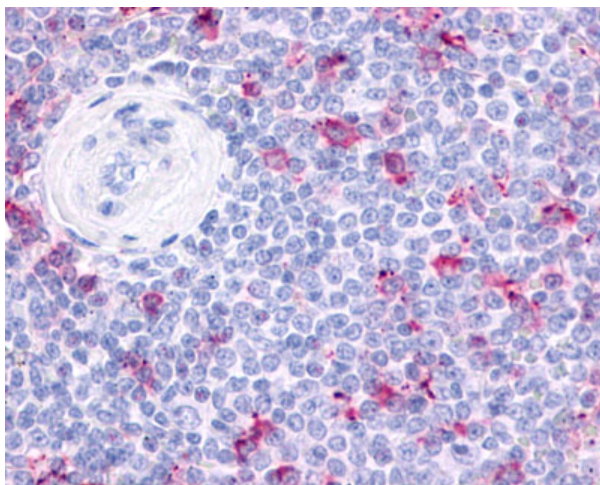
Anti-GPR34 antibody IHC of human brain, neurons and glia. Immunohistochemistry of formalin-fixed, paraffin-embedded tissue after heat-induced antigen retrieval.



Anti-GPR34 antibody IHC of human Lymph Node, Non-Hodgkins Lymphoma. Immunohistochemistry of formalin-fixed, paraffin-embedded tissue after heat-induced antigen retrieval.



Anti-GPR34 antibody IHC of human Lymph Node, Hodgkins Lymphoma. Immunohistochemistry of formalin-fixed, paraffin-embedded tissue after heat-induced antigen retrieval.



Anti-GPR34 antibody IHC of human spleen. Immunohistochemistry of formalin-fixed, paraffin-embedded tissue after heat-induced antigen retrieval.