

## Product datasheet for **TA340802**

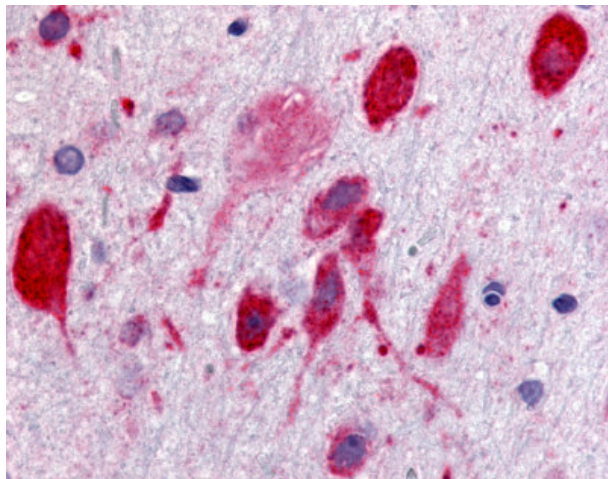
### H963 (GPR171) Rabbit Polyclonal Antibody

#### Product data:

Product Type:	Primary Antibodies
Applications:	IHC
Recommended Dilution:	IHC-P (5 µg/ml)
Reactivity:	Human (Predicted: Monkey, Bat, Rabbit)
Host:	Rabbit
Clonality:	Polyclonal
Immunogen:	GPR171 antibody was raised against synthetic 17 amino acid peptide from 3rd cytoplasmic domain of human GPR171. Percent identity with other species by BLAST analysis: Human, Gorilla, Gibbon, Monkey, Dog, Bovine, Panda (100%); Marmoset, Bat, Rabbit (94%); Elephant, Platypus (88%); Rat, Horse, Opossum (82%).
Formulation:	PBS, 0.1% sodium azide.
Concentration:	lot specific
Purification:	Immunoaffinity purified
Conjugation:	Unconjugated
Storage:	Store at -20°C as received.
Stability:	Stable for 12 months from date of receipt.
Gene Name:	G protein-coupled receptor 171
Database Link:	<a href="#">NP_037440</a> <a href="#">Entrez Gene 709960 Monkey</a> <a href="#">Entrez Gene 29909 Human</a> <a href="#">O14626</a>
Synonyms:	H963
Protein Families:	Druggable Genome, GPCR, Transmembrane



[View online »](#)

**Product images:**

Anti-GPR171 antibody IHC of rat brain, neurons. Immunohistochemistry of formalin-fixed, paraffin-embedded tissue after heat-induced antigen retrieval.