

Product datasheet for **TA340796**

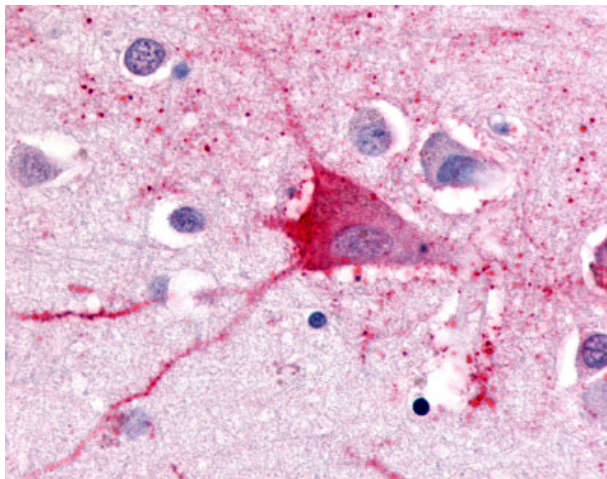
TRH Receptor (TRHR) Rabbit Polyclonal Antibody

Product data:

Product Type:	Primary Antibodies
Applications:	IHC
Recommended Dilution:	IHC-P (19 µg/ml)
Reactivity:	Human (Predicted: Pig, Rabbit, Sheep, Xenopus)
Host:	Rabbit
Clonality:	Polyclonal
Immunogen:	TRH Receptor / TRHR antibody was raised against synthetic 16 amino acid peptide from 3rd cytoplasmic domain of human TRH Receptor. Percent identity with other species by BLAST analysis: Human, Gorilla, Gibbon, Monkey, Marmoset, Rat, Dog, Elephant, Horse (100%); Sheep, Panda, Rabbit, Pig, Xenopus (94%); Mouse, Bovine, Turkey, Platypus (88%); Chicken (81%).
Specificity:	Human TRH Receptor. BLAST analysis of the peptide immunogen showed no homology with other human proteins.
Formulation:	PBS, 0.09% Sodium Azide
Concentration:	1 mg/ml
Purification:	Immunoaffinity purified
Conjugation:	Unconjugated
Storage:	Store at -20°C as received.
Stability:	Stable for 12 months from date of receipt.
Gene Name:	thyrotropin releasing hormone receptor
Database Link:	NP_003292 Entrez Gene 7201 Human P34981
Synonyms:	TRH-R
Protein Families:	Druggable Genome, GPCR, Transmembrane
Protein Pathways:	Calcium signaling pathway, Neuroactive ligand-receptor interaction



[View online »](#)

Product images:

Anti-TRH Receptor antibody IHC of human brain, neurons and glia. Immunohistochemistry of formalin-fixed, paraffin-embedded tissue after heat-induced antigen retrieval.