

Product datasheet for **TA340765**

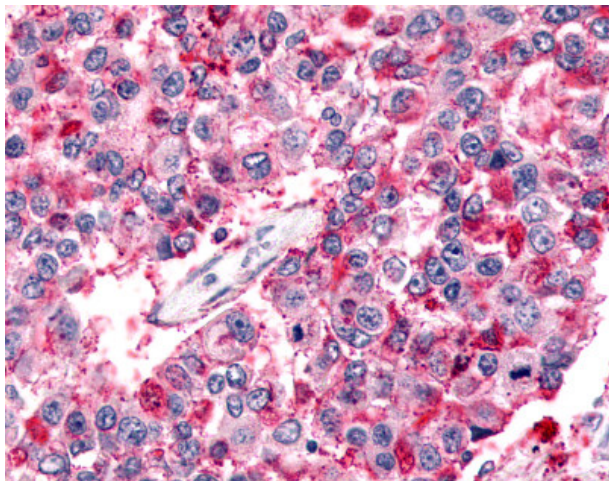
BAI2 (ADGRB2) Rabbit Polyclonal Antibody

Product data:

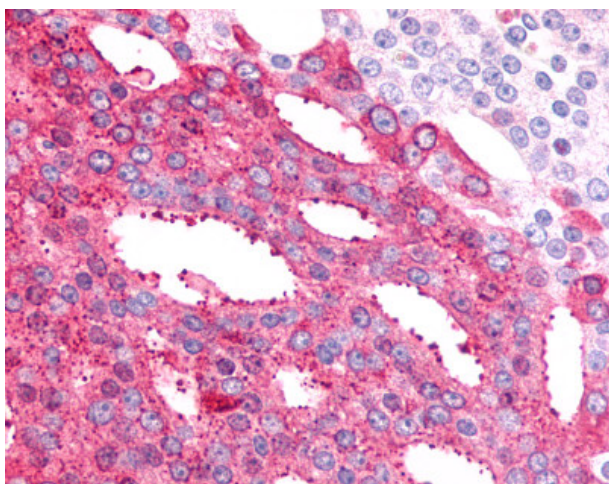
Product Type:	Primary Antibodies
Applications:	IHC
Recommended Dilution:	IHC-P (14 - 21 µg/ml), WB
Reactivity:	Human (Predicted: Monkey, Horse)
Host:	Rabbit
Clonality:	Polyclonal
Immunogen:	BAI2 antibody was raised against synthetic 19 amino acid peptide from N-terminal extracellular domain of human BAI2. Percent identity with other species by BLAST analysis: Human, Gorilla, Marmoset (100%); Orangutan, Monkey, Horse (95%); Hamster, Elephant, Panda, Pig (89%); Gibbon, Mouse, Rat, Dog (84%).
Formulation:	PBS, 0.1% sodium azide.
Concentration:	lot specific
Purification:	Immunoaffinity purified
Conjugation:	Unconjugated
Storage:	Store at -20°C as received.
Stability:	Stable for 12 months from date of receipt.
Gene Name:	adhesion G protein-coupled receptor B2
Database Link:	NP_001694 Entrez Gene 706332 Monkey Entrez Gene 576 Human O60241
Synonyms:	brain-specific angiogenesis inhibitor 2; Brain-specific angiogenesis inhibitor-2
Protein Families:	Druggable Genome, Transmembrane



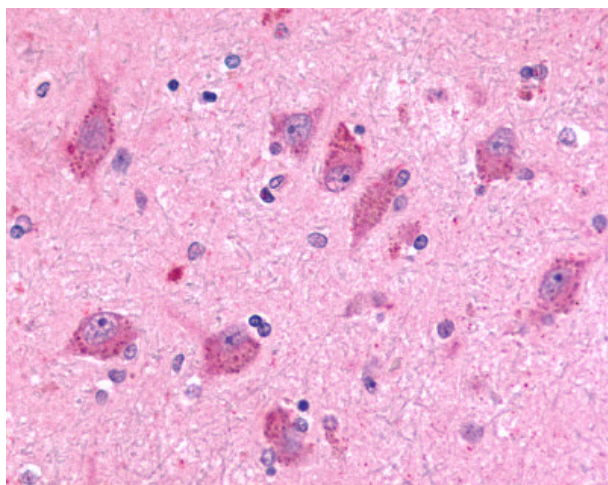
[View online »](#)

Product images:

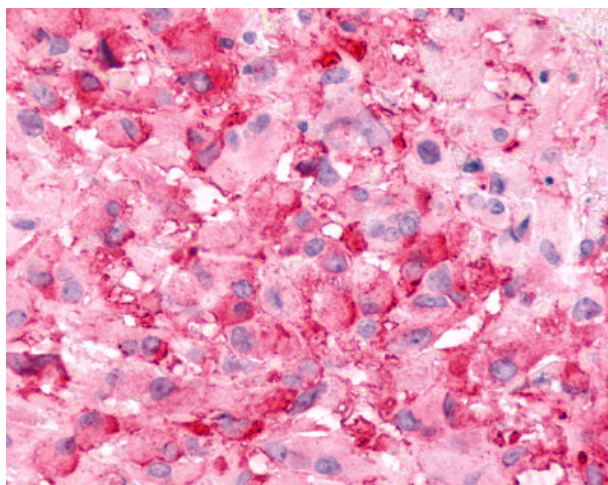
Anti-BAI2 antibody IHC of human Lung, Non-Small Cell Carcinoma. Immunohistochemistry of formalin-fixed, paraffin-embedded tissue after heat-induced antigen retrieval.



Anti-BAI2 antibody IHC of human Prostate, Carcinoma. Immunohistochemistry of formalin-fixed, paraffin-embedded tissue after heat-induced antigen retrieval.



Anti-BAI2 antibody IHC of human brain, neurons and glia. Immunohistochemistry of formalin-fixed, paraffin-embedded tissue after heat-induced antigen retrieval.



Anti-BAI2 antibody IHC of human Brain, Glioblastoma. Immunohistochemistry of formalin-fixed, paraffin-embedded tissue after heat-induced antigen retrieval.