

## Product datasheet for **TA340760**

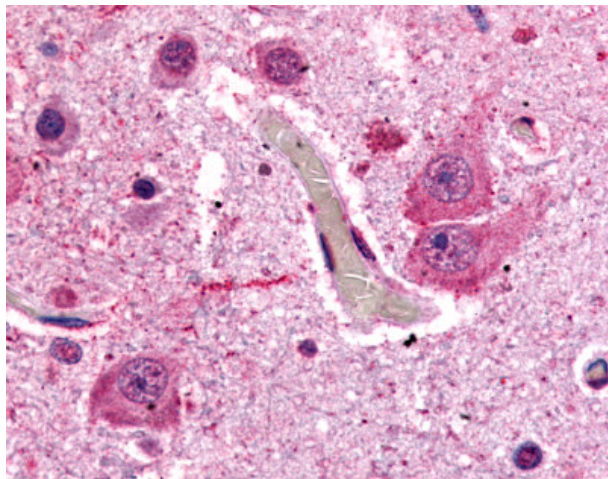
### Metabotropic Glutamate Receptor 1 (GRM1) Rabbit Polyclonal Antibody

#### Product data:

|                       |   |
|-----------------------|---|
| Product Type:         | Primary Antibodies  |
| Applications:         | IHC   |
| Recommended Dilution: | IHC-P (14 - 28 µg/ml)   |
| Reactivity:           | Human (Predicted: Mouse, Rat, Bat, Dog, Hamster, Horse, Rabbit)   |
| Host:                 | Rabbit  |
| Clonality:            | Polyclonal  |
| Immunogen:            | GRM1 / MGLUR1 antibody was raised against synthetic 16 amino acid peptide from C-terminus of human GRM1 / MGLUR1. Percent identity with other species by BLAST analysis: Human, Chimpanzee, Gorilla, Gibbon, Monkey, Marmoset (100%); Mouse, Rat, Hamster, Elephant, Panda, Dog, Bat, Rabbit, Horse (94%); Opossum, Chicken, Platypus (88%); Bovine, Xenopus (81%). |
| Formulation:          | PBS, 0.1% sodium azide.   |
| Concentration:        | lot specific  |
| Purification:         | Immunoaffinity purified   |
| Conjugation:          | Unconjugated  |
| Storage:              | Store at -20°C as received.   |
| Stability:            | Stable for 12 months from date of receipt.  |
| Gene Name:            | glutamate metabotropic receptor 1   |
| Database Link:        | <a href="#">NP_000829</a><br><a href="#">Entrez Gene 14816 Mouse</a> <a href="#">Entrez Gene 24414 Rat</a> <a href="#">Entrez Gene 484024 Dog</a> <a href="#">Entrez Gene 2911 Human</a><br><a href="#">Q13255</a>  |
| Synonyms:             | GPRC1A; GRM1A; mGlu1; MGLUR1; MGLUR1A; SCAR13   |
| Protein Families:     | Druggable Genome, GPCR, Transmembrane   |
| Protein Pathways:     | Calcium signaling pathway, Gap junction, Long-term depression, Long-term potentiation, Neuroactive ligand-receptor interaction  |



[View online »](#)

**Product images:**

Anti-GRM1 / MGLUR1 antibody IHC of human brain, neurons and glia. Immunohistochemistry of formalin-fixed, paraffin-embedded tissue after heat-induced antigen retrieval.