

Product datasheet for **TA340758**

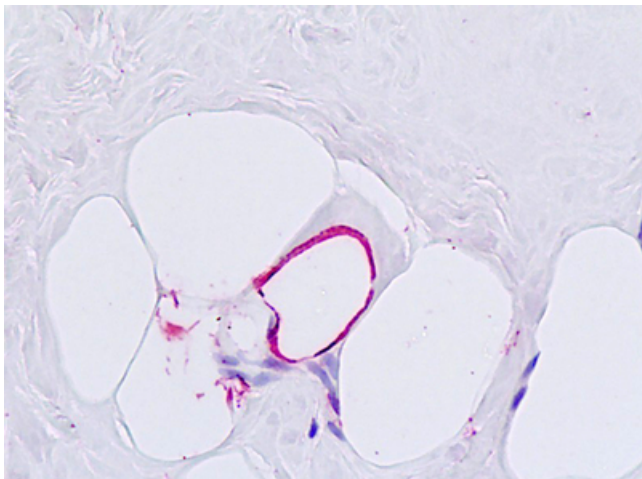
Glucagon Receptor (GCGR) Rabbit Polyclonal Antibody

Product data:

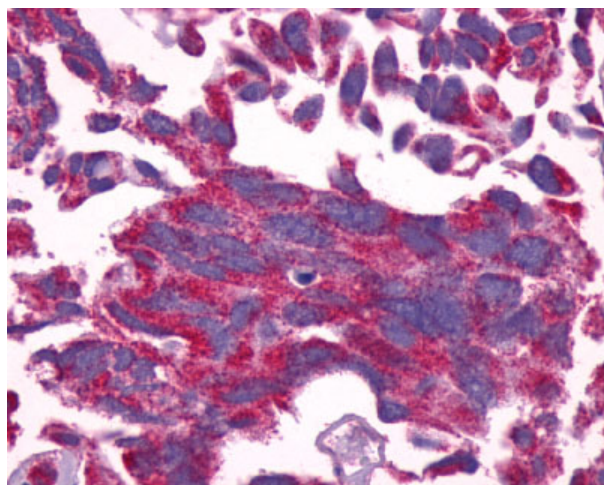
| | |
|-----------------------|--|
| Product Type: | Primary Antibodies |
| Applications: | IHC |
| Recommended Dilution: | IHC-P (2 - 5 µg/ml) |
| Reactivity: | Human (Predicted: Monkey, Bovine, Dog, Hamster, Horse) |
| Host: | Rabbit |
| Clonality: | Polyclonal |
| Immunogen: | GCGR / Glucagon Receptor antibody was raised against synthetic 20 amino acid peptide from N-terminal extracellular domain of human Glucagon Receptor. Percent identity with other species by BLAST analysis: Human, Gibbon (100%); Gorilla, Monkey (95%); Hamster, Bovine, Dog, Horse (90%); Mouse, Rat (85%). |
| Formulation: | PBS, 0.1% sodium azide. |
| Concentration: | lot specific |
| Purification: | Immunoaffinity purified |
| Conjugation: | Unconjugated |
| Storage: | Store at -20°C as received. |
| Stability: | Stable for 12 months from date of receipt. |
| Gene Name: | glucagon receptor |
| Database Link: | NP_000151 Entrez Gene 483368 Dog Entrez Gene 714542 Monkey Entrez Gene 2642 Human P47871 |
| Synonyms: | GGR; GL-R |
| Protein Families: | Druggable Genome, GPCR, Transmembrane |
| Protein Pathways: | Neuroactive ligand-receptor interaction |



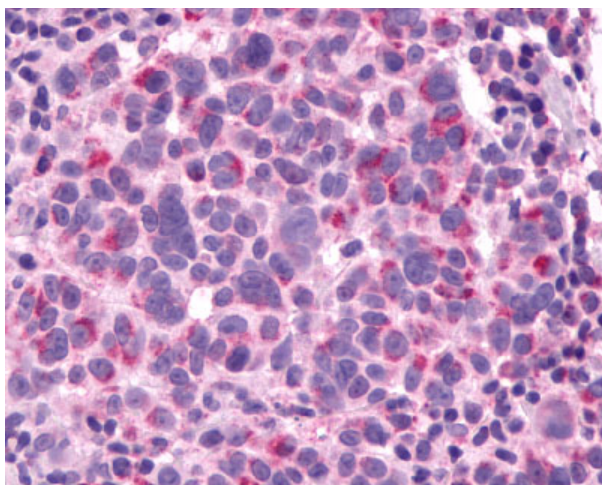
[View online »](#)

Product images:

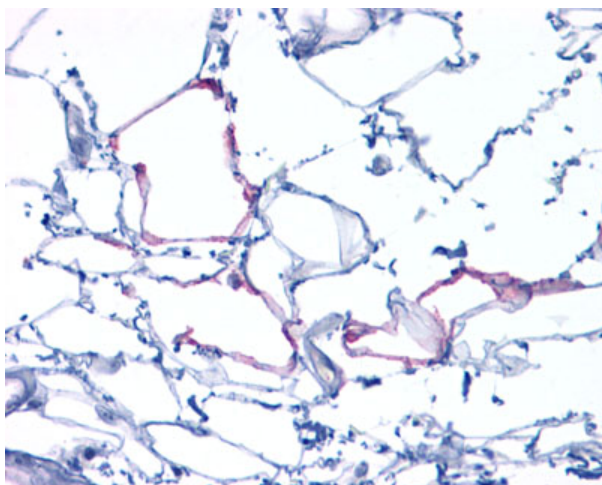
Human, Adipocyte: Formalin-Fixed Paraffin-Embedded (FFPE)



Anti-GCGR / Glucagon Receptor antibody IHC of human Prostate, Carcinoma.
Immunohistochemistry of formalin-fixed, paraffin-embedded tissue after heat-induced antigen retrieval.



Anti-GCGR / Glucagon Receptor antibody IHC of human Skin, Melanoma. Immunohistochemistry of formalin-fixed, paraffin-embedded tissue after heat-induced antigen retrieval.



Anti-GCGR / Glucagon Receptor antibody IHC of human Adipose, Liposarcoma. Immunohistochemistry of formalin-fixed, paraffin-embedded tissue after heat-induced antigen retrieval.