

## Product datasheet for **TA340757**

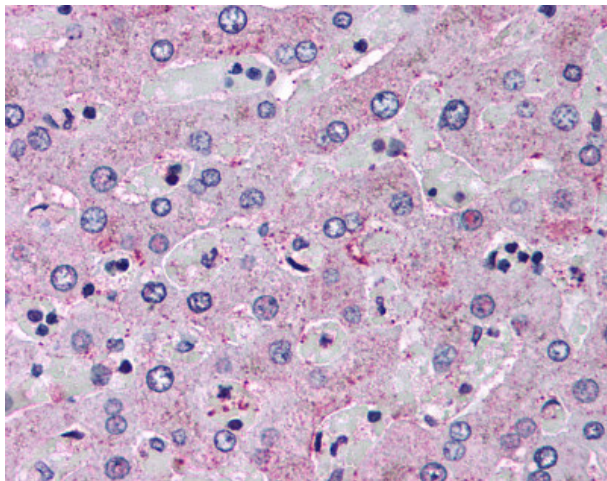
### Glucagon Receptor (GCGR) Rabbit Polyclonal Antibody

#### Product data:

Product Type:	Primary Antibodies
Applications:	IHC
Recommended Dilution:	IHC-P (8 µg/ml)
Reactivity:	Human (Predicted: Mouse, Rat, Dog, Hamster, Horse)
Host:	Rabbit
Clonality:	Polyclonal
Immunogen:	GCGR / Glucagon Receptor antibody was raised against synthetic 20 amino acid peptide from N-terminal extracellular domain of human Glucagon Receptor. Percent identity with other species by BLAST analysis: Human, Gorilla, Gibbon, Monkey, Bovine (100%); Mouse, Rat, Hamster, Horse (95%); Elephant, Dog (90%); Panda (85%).
Formulation:	PBS, 0.1% sodium azide.
Concentration:	lot specific
Purification:	Immunoaffinity purified
Conjugation:	Unconjugated
Storage:	Store at -20°C as received.
Stability:	Stable for 12 months from date of receipt.
Gene Name:	glucagon receptor
Database Link:	<a href="#">NP_000151</a> <a href="#">Entrez Gene 14527 Mouse</a> <a href="#">Entrez Gene 24953 Rat</a> <a href="#">Entrez Gene 483368 Dog</a> <a href="#">Entrez Gene 2642 Human</a> <a href="#">P47871</a>
Synonyms:	GGR; GL-R
Protein Families:	Druggable Genome, GPCR, Transmembrane
Protein Pathways:	Neuroactive ligand-receptor interaction



[View online »](#)

**Product images:**

Anti-Glucagon Receptor antibody IHC of human liver. Immunohistochemistry of formalin-fixed, paraffin-embedded tissue after heat-induced antigen retrieval.