

## Product datasheet for **TA340756**

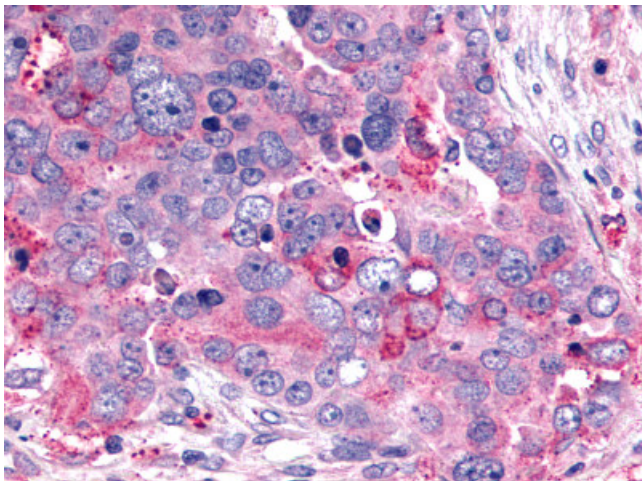
### GHRHR Rabbit Polyclonal Antibody

#### Product data:

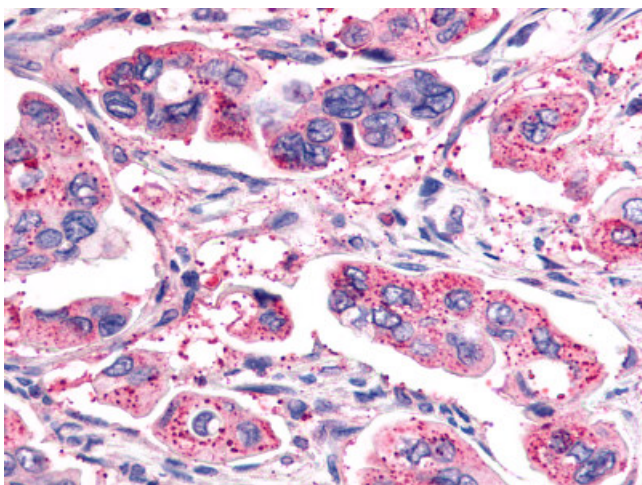
Product Type:	Primary Antibodies
Applications:	IHC
Recommended Dilution:	IHC-P (10 - 16 µg/ml)
Reactivity:	Human (Predicted: Mouse, Rat, Hamster, Pig, Rabbit)
Host:	Rabbit
Clonality:	Polyclonal
Immunogen:	GHRHR antibody was raised against synthetic 16 amino acid peptide from C-terminus of human GHRHR. Percent identity with other species by BLAST analysis: Human, Gorilla, Gibbon, Monkey, Marmoset (100%); Mouse, Rat, Hamster, Elephant, Zebu, Rabbit, Pig (94%); Panda, Bovine, Dog, Horse (88%).
Formulation:	PBS, 0.1% sodium azide.
Concentration:	lot specific
Purification:	Immunoaffinity purified
Conjugation:	Unconjugated
Storage:	Store at -20°C as received.
Stability:	Stable for 12 months from date of receipt.
Gene Name:	growth hormone releasing hormone receptor
Database Link:	<a href="#">NP_001009824</a> <a href="#">Entrez Gene 14602 Mouse</a> <a href="#">Entrez Gene 25321 Rat</a> <a href="#">Entrez Gene 2692 Human</a> <a href="#">Q02643</a>
Synonyms:	GHRFR; GHRHRpsv; GRFR; IGHD1B
Protein Families:	Druggable Genome, GPCR, Transmembrane
Protein Pathways:	Neuroactive ligand-receptor interaction



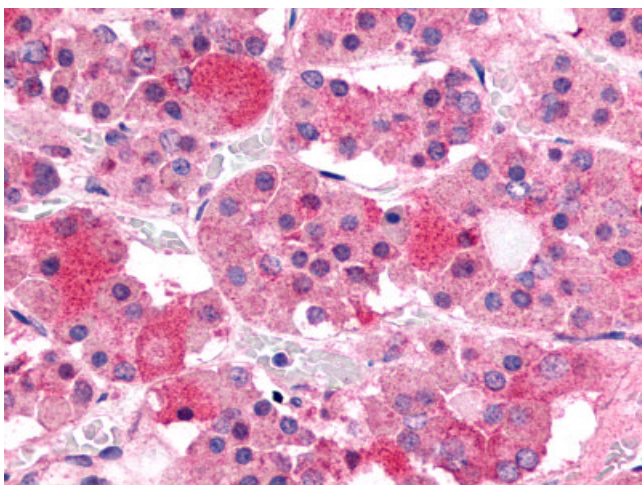
[View online »](#)

**Product images:**

Anti-GHRHR antibody IHC of human Ovary, Carcinoma. Immunohistochemistry of formalin-fixed, paraffin-embedded tissue after heat-induced antigen retrieval.



Anti-GHRHR antibody IHC of human Pancreas, Carcinoma. Immunohistochemistry of formalin-fixed, paraffin-embedded tissue after heat-induced antigen retrieval.



Anti-GHRHR antibody IHC of human pituitary, anterior. Immunohistochemistry of formalin-fixed, paraffin-embedded tissue after heat-induced antigen retrieval.