

Product datasheet for **TA340754**

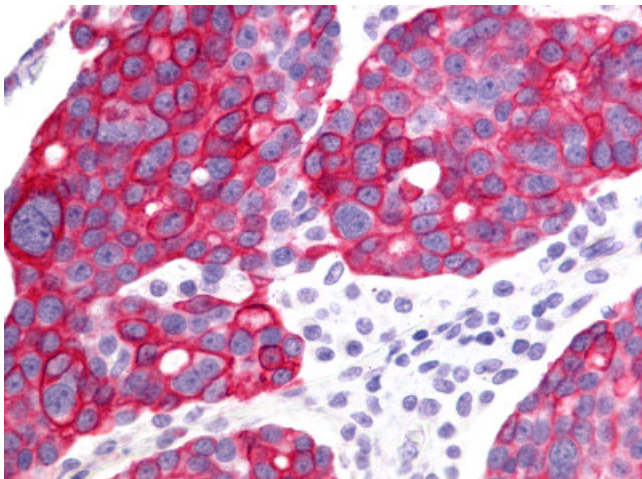
GHRHR Rabbit Polyclonal Antibody

Product data:

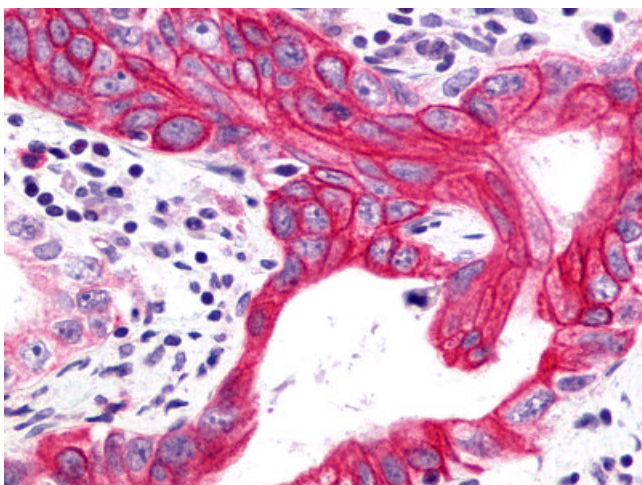
Product Type:	Primary Antibodies
Applications:	IHC
Recommended Dilution:	IHC-P (3 µg/ml)
Reactivity:	Human (Predicted: Monkey, Dog)
Host:	Rabbit
Clonality:	Polyclonal
Immunogen:	GHRHR antibody was raised against synthetic 18 amino acid peptide from N-terminal extracellular domain of human GHRHR. Percent identity with other species by BLAST analysis: Human, Gorilla (100%); Gibbon, Marmoset, Panda, Dog (94%); Zebu, Bovine (89%); Rabbit, Pig (83%).
Formulation:	PBS, 0.1% sodium azide.
Concentration:	lot specific
Purification:	Immunoaffinity purified
Conjugation:	Unconjugated
Storage:	Store at -20°C as received.
Stability:	Stable for 12 months from date of receipt.
Gene Name:	growth hormone releasing hormone receptor
Database Link:	NP_001009824 Entrez Gene 482385 Dog Entrez Gene 696430 Monkey Entrez Gene 2692 Human Q02643
Synonyms:	GHRFR; GHRHRpsv; GRFR; IGHD1B
Protein Families:	Druggable Genome, GPCR, Transmembrane
Protein Pathways:	Neuroactive ligand-receptor interaction



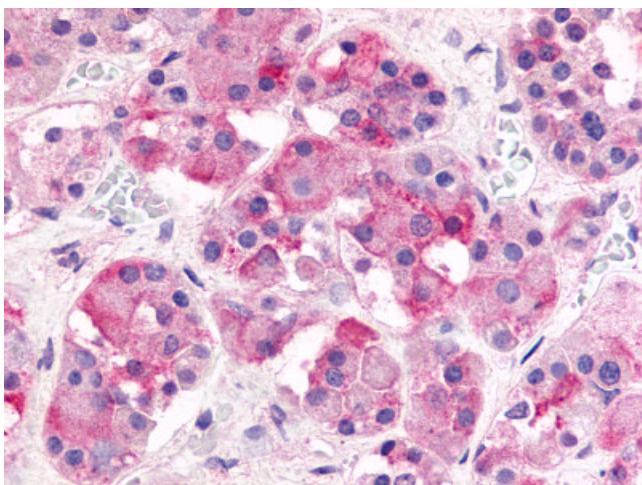
[View online »](#)

Product images:

Anti-GHRHR antibody IHC of human Ovary, Carcinoma. Immunohistochemistry of formalin-fixed, paraffin-embedded tissue after heat-induced antigen retrieval.



Anti-GHRHR antibody IHC of human Pancreas, Carcinoma. Immunohistochemistry of formalin-fixed, paraffin-embedded tissue after heat-induced antigen retrieval.



Anti-GHRHR antibody IHC of human pituitary, anterior. Immunohistochemistry of formalin-fixed, paraffin-embedded tissue after heat-induced antigen retrieval.