

## Product datasheet for **TA340753**

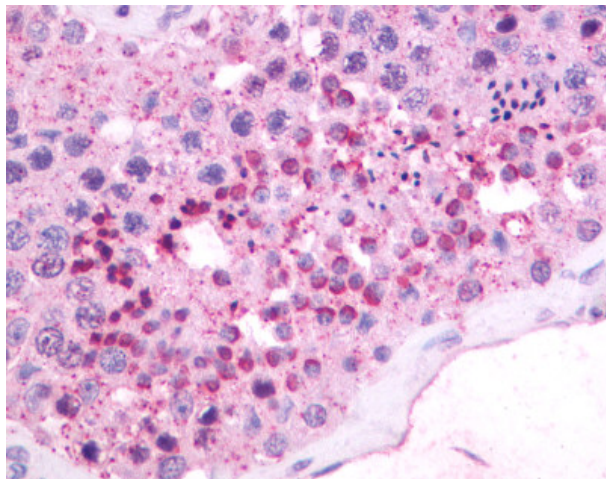
### NMBR Rabbit Polyclonal Antibody

#### Product data:

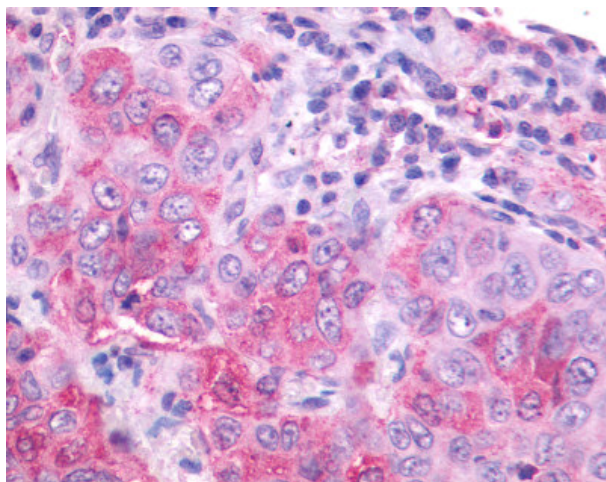
Product Type:	Primary Antibodies
Applications:	IHC
Recommended Dilution:	IHC-P (16 µg/ml)
Reactivity:	Human (Predicted: Monkey, Rat, Dog, Hamster)
Host:	Rabbit
Clonality:	Polyclonal
Immunogen:	NMBR antibody was raised against synthetic 16 amino acid peptide from 3rd cytoplasmic domain of human NMBR. Percent identity with other species by BLAST analysis: Human, Gorilla, Gibbon, Monkey, Mouse, Panda, Bovine, Bat, Horse, Rabbit, Pig (100%); Marmoset, Rat, Hamster, Dog, Opossum (94%); Platypus (88%); Elephant, Xenopus (81%).
Formulation:	PBS, 0.1% sodium azide.
Concentration:	lot specific
Purification:	Immunoaffinity purified
Conjugation:	Unconjugated
Storage:	Store at -20°C as received.
Stability:	Stable for 12 months from date of receipt.
Gene Name:	neuromedin B receptor
Database Link:	<a href="#">NP_002502</a> <a href="#">Entrez Gene 25264 Rat</a> <a href="#">Entrez Gene 611644 Dog</a> <a href="#">Entrez Gene 574262 Monkey</a> <a href="#">Entrez Gene 4829 Human</a> <a href="#">P28336</a>
Synonyms:	BB1; BB1R; NMB-R
Protein Families:	Druggable Genome, GPCR, Transmembrane
Protein Pathways:	Neuroactive ligand-receptor interaction



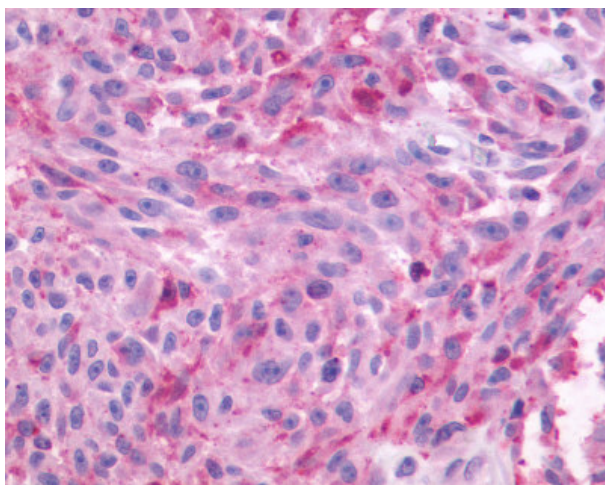
[View online »](#)

**Product images:**

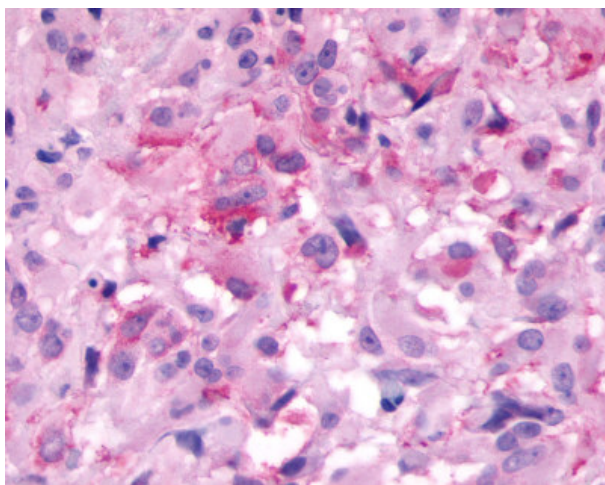
Anti-NMBR antibody IHC of human testis. Immunohistochemistry of formalin-fixed, paraffin-embedded tissue after heat-induced antigen retrieval. Antibody dilution 16 ug/ml.



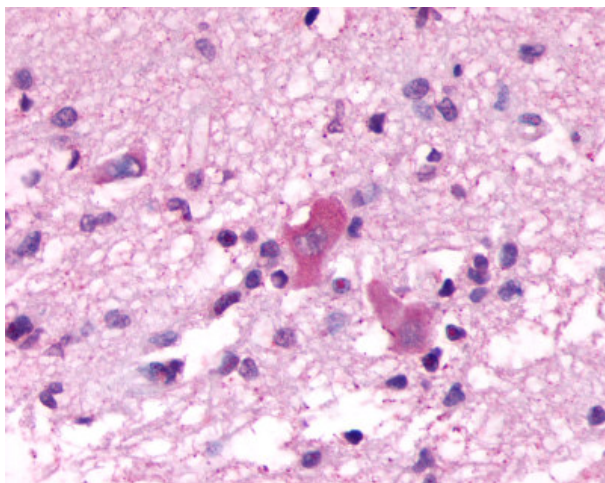
Anti-NMBR antibody IHC of human lung carcinoma. Immunohistochemistry of formalin-fixed, paraffin-embedded tissue after heat-induced antigen retrieval. Antibody dilution 16 ug/ml.



Anti-NMBR antibody IHC of human Skin, Melanoma. Immunohistochemistry of formalin-fixed, paraffin-embedded tissue after heat-induced antigen retrieval.



Anti-NMBR antibody IHC of human brain, glioblastoma. Immunohistochemistry of formalin-fixed, paraffin-embedded tissue after heat-induced antigen retrieval.



Anti-NMBR antibody IHC of human brain, olfactory bulb. Immunohistochemistry of formalin-fixed, paraffin-embedded tissue after heat-induced antigen retrieval.