

## Product datasheet for **TA340746**

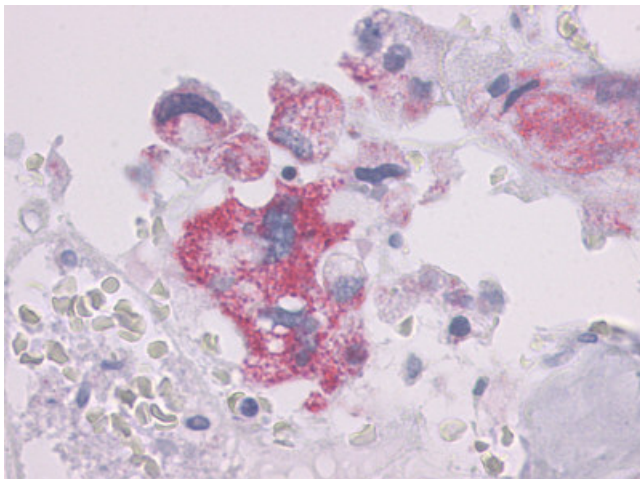
### Parathyroid Hormone Receptor 1 (PTH1R) Rabbit Polyclonal Antibody

#### Product data:

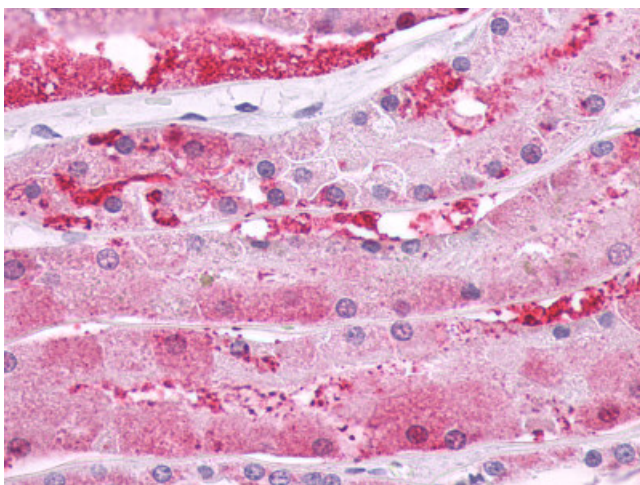
Product Type:	Primary Antibodies
Applications:	IHC
Recommended Dilution:	IHC-P (2 - 4 µg/ml)
Reactivity:	Human (Predicted: Bovine, Dog, Pig)
Host:	Rabbit
Clonality:	Polyclonal
Immunogen:	PTHR / PTHR1 antibody was raised against synthetic 20 amino acid peptide from N-terminal extracellular domain of human PTH1R. Percent identity with other species by BLAST analysis: Human, Monkey, Marmoset (100%); Gorilla, Gibbon, Bovine, Pig (95%); Orangutan, Elephant, Dog (90%); Panda, Horse (85%); Rabbit (80%).
Formulation:	PBS, 0.1% sodium azide.
Concentration:	lot specific
Purification:	Immunoaffinity purified
Conjugation:	Unconjugated
Storage:	Store at -20°C as received.
Stability:	Stable for 12 months from date of receipt.
Gene Name:	parathyroid hormone 1 receptor
Database Link:	<a href="#">NP_000307</a> <a href="#">Entrez Gene 403779 Dog</a> <a href="#">Entrez Gene 5745 Human</a> <a href="#">Q03431</a>
Synonyms:	PFE; PTHR; PTHR1
Protein Families:	Druggable Genome, GPCR, Transmembrane
Protein Pathways:	Neuroactive ligand-receptor interaction



[View online »](#)

**Product images:**

Anti-PTHR / PTHR1 antibody IHC of human Bone, Giant Cell Tumor. Immunohistochemistry of formalin-fixed, paraffin-embedded tissue after heat-induced antigen retrieval.



Anti-PTH1R antibody IHC of human kidney, renal tubules. Immunohistochemistry of formalin-fixed, paraffin-embedded tissue after heat-induced antigen retrieval.