

Product datasheet for **TA340745**

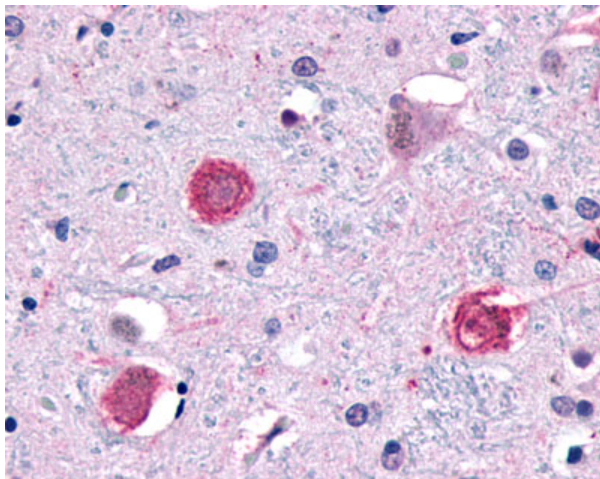
CMKLR2 Rabbit Polyclonal Antibody

Product data:

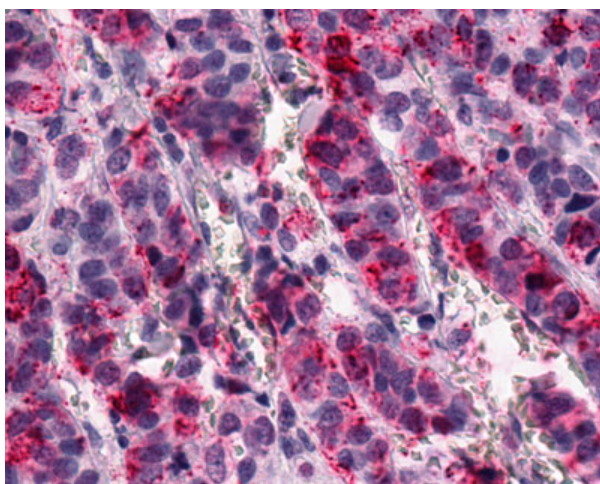
Product Type:	Primary Antibodies
Applications:	IHC
Recommended Dilution:	IHC-P (23 - 46 µg/ml)
Reactivity:	Human (Predicted: Monkey, Bat, Bovine)
Host:	Rabbit
Clonality:	Polyclonal
Immunogen:	GPR1 antibody was raised against synthetic 17 amino acid peptide from C-terminus of human GPR1. Percent identity with other species by BLAST analysis: Human, Gorilla, Gibbon, Monkey (100%); Marmoset, Bovine, Bat (94%); Rat, Elephant, Panda, Dog, Pig, Platypus (88%); Mouse, Horse, Opossum (82%).
Formulation:	PBS, 0.1% sodium azide.
Concentration:	lot specific
Purification:	Immunoaffinity purified
Conjugation:	Unconjugated
Storage:	Store at -20°C as received.
Stability:	Stable for 12 months from date of receipt.
Gene Name:	G protein-coupled receptor 1
Database Link:	NP_005270 Entrez Gene 707120 Monkey Entrez Gene 2825 Human P46091
Synonyms:	G protein-coupled receptor 1
Protein Families:	Druggable Genome, GPCR, Transmembrane



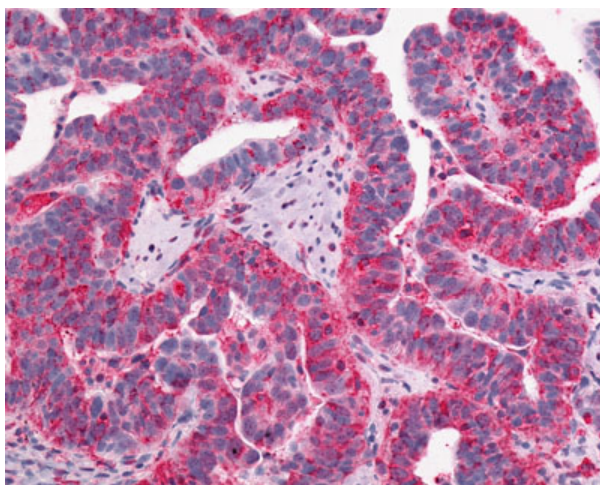
[View online »](#)

Product images:

Anti-GPR1 antibody IHC of human brain, neurons and glia. Immunohistochemistry of formalin-fixed, paraffin-embedded tissue after heat-induced antigen retrieval.



Anti-GPR1 antibody IHC of human Breast, Carcinoma. Immunohistochemistry of formalin-fixed, paraffin-embedded tissue after heat-induced antigen retrieval.



Anti-GPR1 antibody IHC of human Ovary, Carcinoma. Immunohistochemistry of formalin-fixed, paraffin-embedded tissue after heat-induced antigen retrieval.