

Product datasheet for **TA340741**

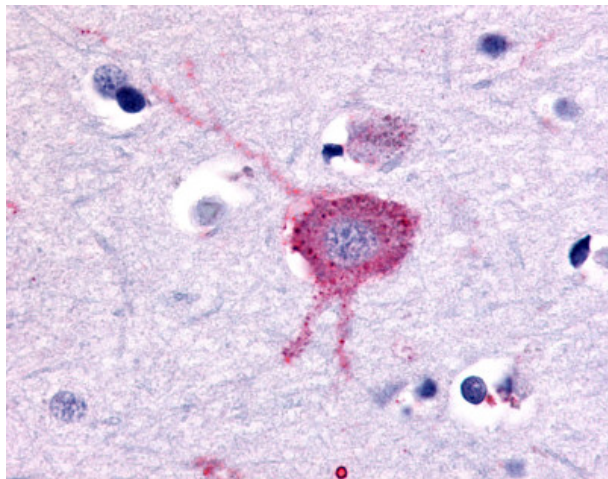
Metabotropic Glutamate Receptor 2 (GRM2) Rabbit Polyclonal Antibody

Product data:

Product Type:	Primary Antibodies
Applications:	IHC
Recommended Dilution:	IHC-P (32 µg/ml)
Reactivity:	Human (Predicted: Monkey, Mouse, Bovine, Horse)
Host:	Rabbit
Clonality:	Polyclonal
Immunogen:	GRM2 / MGLUR2 antibody was raised against synthetic 18 amino acid peptide from N-terminal extracellular domain of human GRM2 / MGLUR2. Percent identity with other species by BLAST analysis: Human, Chimpanzee, Gorilla, Gibbon, Monkey, Rat, Hamster, Panda, Dog, Bat, Rabbit (100%); Marmoset, Mouse, Elephant, Bovine, Horse (94%); Platypus (83%).
Formulation:	PBS, 0.1% sodium azide.
Concentration:	lot specific
Purification:	Immunoaffinity purified
Conjugation:	Unconjugated
Storage:	Store at -20°C as received.
Stability:	Stable for 12 months from date of receipt.
Gene Name:	glutamate metabotropic receptor 2
Database Link:	NP_000830 Entrez Gene 108068 Mouse Entrez Gene 700214 Monkey Entrez Gene 2912 Human Q14416
Synonyms:	GLUR2; GPRC1B; mGlu2; MGLUR2
Protein Families:	Druggable Genome, GPCR, Transmembrane
Protein Pathways:	Neuroactive ligand-receptor interaction



[View online »](#)

Product images:

Anti-GRM2 / MGLUR2 antibody IHC of human brain, neurons and glia. Immunohistochemistry of formalin-fixed, paraffin-embedded tissue after heat-induced antigen retrieval.