

Product datasheet for **TA340739**

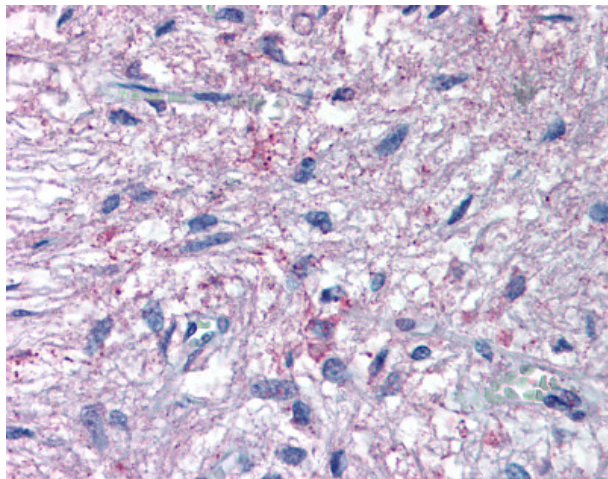
Melatonin Related Receptor (GPR50) Rabbit Polyclonal Antibody

Product data:

Product Type:	Primary Antibodies
Applications:	IHC
Recommended Dilution:	IHC-P (3 - 28 µg/ml)
Reactivity:	Human (Predicted: Monkey)
Host:	Rabbit
Clonality:	Polyclonal
Immunogen:	GPR50 antibody was raised against synthetic 20 amino acid peptide from C-terminus of human GPR50. Percent identity with other species by BLAST analysis: Human, Gorilla (100%); Monkey (95%); Marmoset (90%); Gibbon (85%).
Formulation:	PBS, 0.1% sodium azide.
Concentration:	lot specific
Purification:	Immunoaffinity purified
Conjugation:	Unconjugated
Storage:	Store at -20°C as received.
Stability:	Stable for 12 months from date of receipt.
Gene Name:	G protein-coupled receptor 50
Database Link:	NP_004215 Entrez Gene 703817 Monkey Entrez Gene 9248 Human Q13585
Synonyms:	H9; Mel1c
Protein Families:	Druggable Genome, GPCR, Transmembrane
Protein Pathways:	Neuroactive ligand-receptor interaction



[View online »](#)

Product images:

Anti-GPR50 antibody IHC of human pituitary. Immunohistochemistry of formalin-fixed, paraffin-embedded tissue after heat-induced antigen retrieval.