

Product datasheet for **TA340732**

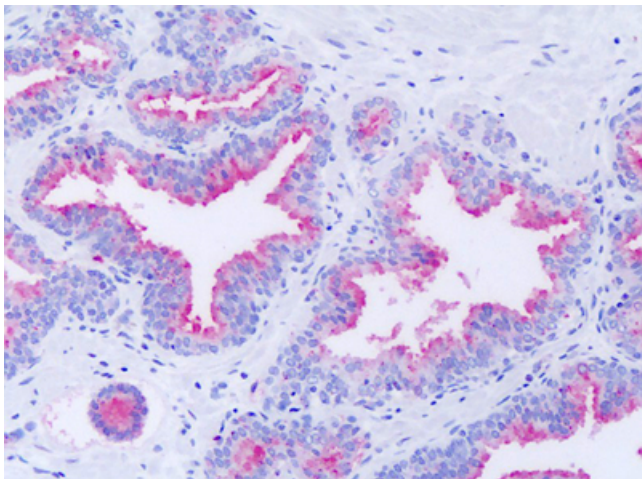
GPR63 Rabbit Polyclonal Antibody

Product data:

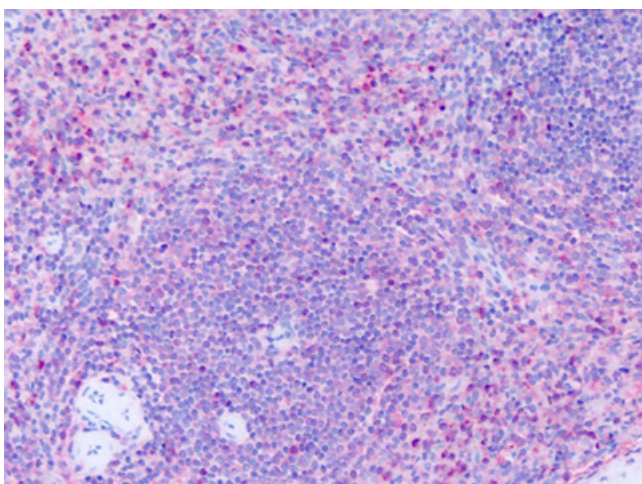
Product Type:	Primary Antibodies
Applications:	IHC
Recommended Dilution:	IHC-P (6 - 11 µg/ml)
Reactivity:	Human (Predicted: Monkey, Dog, Pig, Rabbit)
Host:	Rabbit
Clonality:	Polyclonal
Immunogen:	GPR63 antibody was raised against synthetic 13 amino acid peptide from 1st extracellular domain of human GPR63. Percent identity with other species by BLAST analysis: Human, Gorilla, Gibbon, Marmoset, Mouse, Rat, Elephant, Panda, Bovine, Bat, Horse (100%); Monkey, Dog, Rabbit, Pig (92%); Opossum (85%).
Formulation:	PBS, 0.1% sodium azide.
Concentration:	lot specific
Purification:	Immunoaffinity purified
Conjugation:	Unconjugated
Storage:	Store at -20°C as received.
Stability:	Stable for 12 months from date of receipt.
Gene Name:	G protein-coupled receptor 63
Database Link:	NP_110411 Entrez Gene 100685057 Dog Entrez Gene 704888 Monkey Entrez Gene 81491 Human Q9BZJ6
Synonyms:	PSP24(beta); PSP24B
Protein Families:	Druggable Genome, GPCR, Transmembrane



[View online »](#)

Product images:

Anti-GPR63 antibody IHC of human prostate. Immunohistochemistry of formalin-fixed, paraffin-embedded tissue after heat-induced antigen retrieval. Antibody dilution 6-11 ug/ml.



Anti-GPR63 antibody IHC of human spleen. Immunohistochemistry of formalin-fixed, paraffin-embedded tissue after heat-induced antigen retrieval. Antibody dilution 6-11 ug/ml.