

Product datasheet for **TA340730**

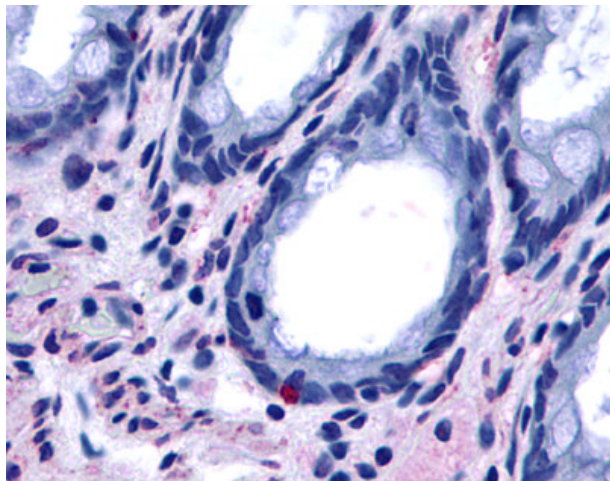
GPR15 Rabbit Polyclonal Antibody

Product data:

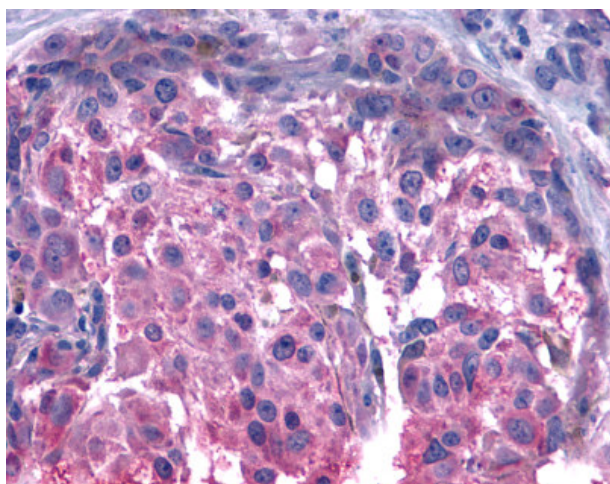
Product Type:	Primary Antibodies
Applications:	IHC
Recommended Dilution:	IHC-P (13 µg/ml)
Reactivity:	Human (Predicted: Monkey, Hamster)
Host:	Rabbit
Clonality:	Polyclonal
Immunogen:	BOB / GPR15 antibody was raised against synthetic 19 amino acid peptide from C-terminus of human GPR15. Percent identity with other species by BLAST analysis: Human, Chimpanzee, Gorilla, Gibbon, Monkey, Elephant, Pig (100%); Marmoset, Hamster (95%); Panda, Bat, Dog, Bovine, Rabbit, Horse (89%).
Formulation:	PBS, 0.1% sodium azide.
Concentration:	lot specific
Purification:	Immunoaffinity purified
Conjugation:	Unconjugated
Storage:	Store at -20°C as received.
Stability:	Stable for 12 months from date of receipt.
Gene Name:	G protein-coupled receptor 15
Database Link:	NP_005281 Entrez Gene 698718 Monkey Entrez Gene 2838 Human P49685
Synonyms:	BOB
Protein Families:	Druggable Genome, GPCR, Transmembrane



[View online »](#)

Product images:

Anti-GPR15 antibody IHC of human colon. Immunohistochemistry of formalin-fixed, paraffin-embedded tissue after heat-induced antigen retrieval.



Anti-BOB / GPR15 antibody IHC of human Skin, Melanoma. Immunohistochemistry of formalin-fixed, paraffin-embedded tissue after heat-induced antigen retrieval.