

## Product datasheet for **TA340723**

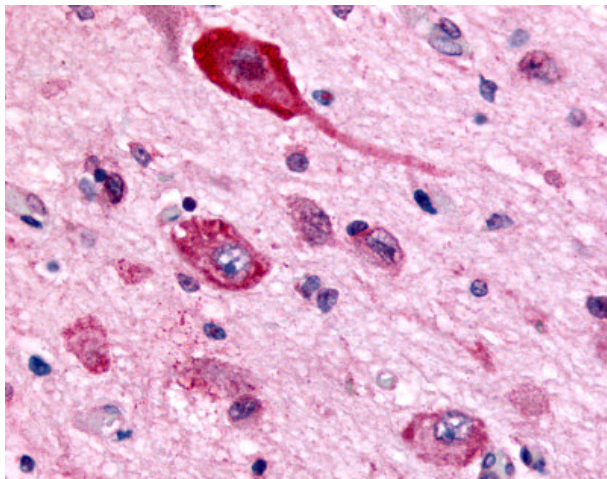
### GABA B Receptor 1 (GABBR1) Rabbit Polyclonal Antibody

#### Product data:

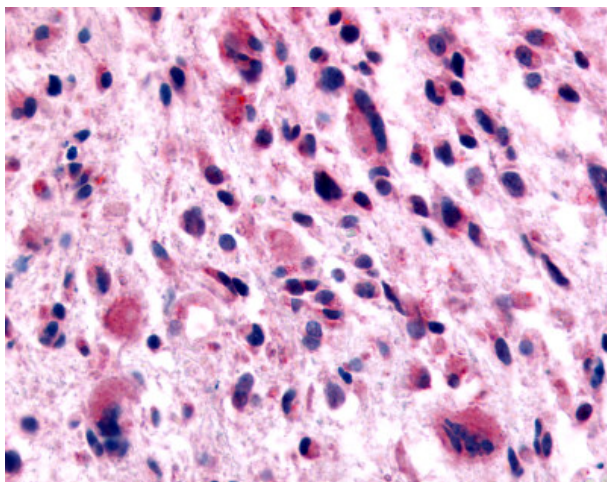
Product Type:	Primary Antibodies
Applications:	IHC
Recommended Dilution:	IHC-P (7 - 13 µg/ml)
Reactivity:	Human (Predicted: Rabbit)
Host:	Rabbit
Clonality:	Polyclonal
Immunogen:	GABABR1 / GABBR1 antibody was raised against synthetic 15 amino acid peptide from N-terminal extracellular domain of human GABBR1. Percent identity with other species by BLAST analysis: Human, Gorilla, Orangutan, Gibbon, Monkey, Marmoset, Mouse, Rat, Hamster, Elephant, Panda, Bovine, Dog, Bat, Horse, Pig (100%); Rabbit, Platypus (93%); Lizard, Xenopus, Stickleback, Zebrafish (87%); Opossum (80%).
Formulation:	PBS, 0.1% sodium azide.
Concentration:	lot specific
Purification:	Immunoaffinity purified
Conjugation:	Unconjugated
Storage:	Store at -20°C as received.
Stability:	Stable for 12 months from date of receipt.
Gene Name:	gamma-aminobutyric acid type B receptor subunit 1
Database Link:	<a href="#">NP_068704</a> <a href="#">Entrez Gene 2550 Human</a> <a href="#">Q9UBS5</a>
Synonyms:	GABABR1; GABBR1-3; GB1; GPRC3A
Protein Families:	Druggable Genome, GPCR, Secreted Protein, Transmembrane
Protein Pathways:	Neuroactive ligand-receptor interaction



[View online »](#)

**Product images:**

Anti-GABBR1 antibody IHC of human brain, neurons and glia. Immunohistochemistry of formalin-fixed, paraffin-embedded tissue after heat-induced antigen retrieval.



Anti-GABBR1 / GABBR1 antibody IHC of human Brain, Glioblastoma. Immunohistochemistry of formalin-fixed, paraffin-embedded tissue after heat-induced antigen retrieval.