

Product datasheet for **TA340722**

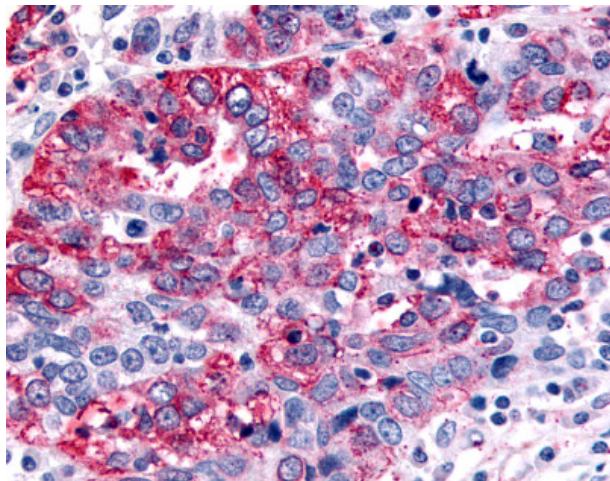
GABA B Receptor 1 (GABBR1) Rabbit Polyclonal Antibody

Product data:

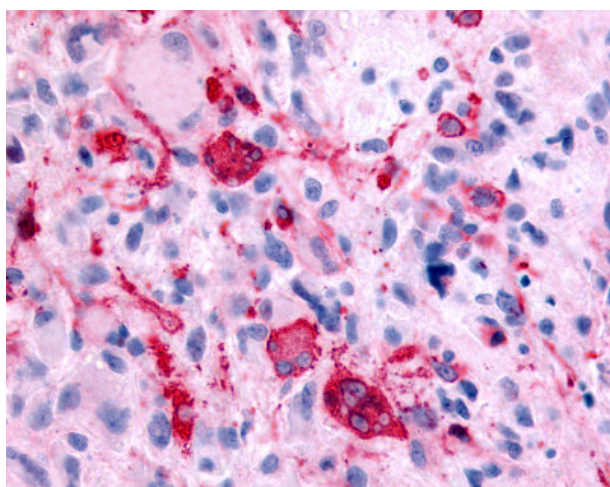
Product Type:	Primary Antibodies
Applications:	IHC
Recommended Dilution:	IHC-P (9 - 18 µg/ml)
Reactivity:	Human
Host:	Rabbit
Clonality:	Polyclonal
Immunogen:	GABABR1 / GABBR1 antibody was raised against synthetic 15 amino acid peptide from N-terminal extracellular domain of human GABBR1. Percent identity with other species by BLAST analysis: Human, Gorilla, Orangutan, Monkey, Mouse, Rat, Hamster, Elephant, Panda, Bovine, Rabbit, Pig, Opossum (100%); Horse (87%); Xenopus, Stickleback, Zebrafish (80%).
Formulation:	PBS, 0.1% sodium azide.
Concentration:	lot specific
Purification:	Immunoaffinity purified
Conjugation:	Unconjugated
Storage:	Store at -20°C as received.
Stability:	Stable for 12 months from date of receipt.
Gene Name:	gamma-aminobutyric acid type B receptor subunit 1
Database Link:	NP_068704 Entrez Gene 2550 Human Q9UBS5
Synonyms:	GABABR1; GABBR1-3; GB1; GPRC3A
Protein Families:	Druggable Genome, GPCR, Secreted Protein, Transmembrane
Protein Pathways:	Neuroactive ligand-receptor interaction



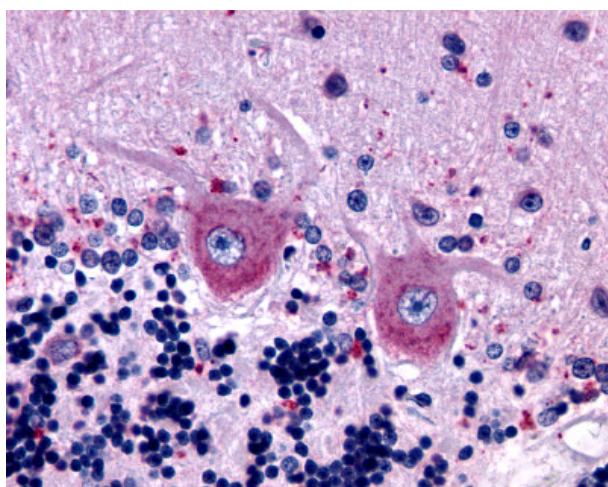
[View online »](#)

Product images:

Anti-GABABR1 / GABBR1 antibody IHC of human Ovary, Carcinoma. Immunohistochemistry of formalin-fixed, paraffin-embedded tissue after heat-induced antigen retrieval.



Anti-GABABR1 / GABBR1 antibody IHC of human Brain, Glioblastoma. Immunohistochemistry of formalin-fixed, paraffin-embedded tissue after heat-induced antigen retrieval.



Anti-GABBR1 antibody IHC of human brain, Purkinje neurons. Immunohistochemistry of formalin-fixed, paraffin-embedded tissue after heat-induced antigen retrieval.