

Product datasheet for **TA340720**

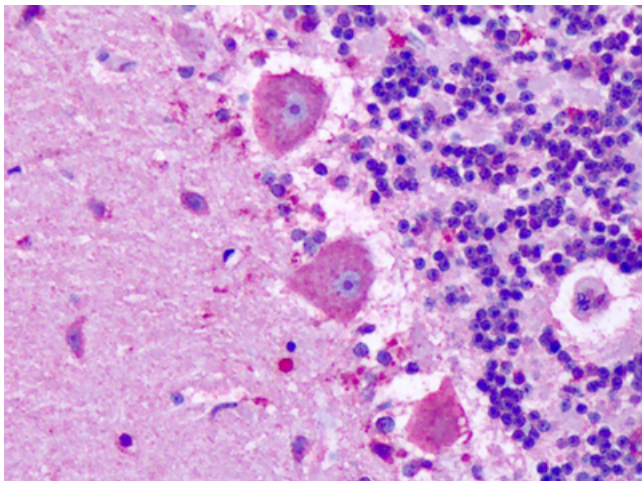
MRGX3 (MRGPRX3) Rabbit Polyclonal Antibody

Product data:

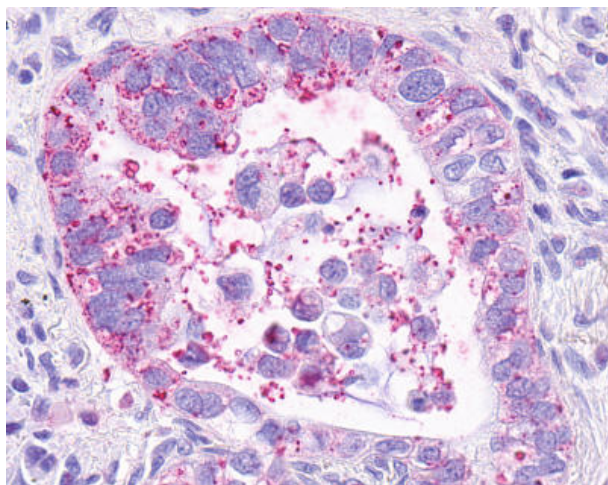
Product Type:	Primary Antibodies
Applications:	IHC
Recommended Dilution:	IHC-P (21 µg/ml)
Reactivity:	Human
Host:	Rabbit
Clonality:	Polyclonal
Immunogen:	MRGPRX3 / MRGX3 antibody was raised against synthetic 17 amino acid peptide from 1st extracellular domain of human MRGPRX3 / MRGX3. Percent identity with other species by BLAST analysis: Human (100%); Gorilla (94%); Monkey (82%).
Formulation:	PBS, 0.1% sodium azide.
Concentration:	lot specific
Purification:	Immunoaffinity purified
Conjugation:	Unconjugated
Storage:	Store at -20°C as received.
Stability:	Stable for 12 months from date of receipt.
Gene Name:	MAS related GPR family member X3
Database Link:	NP_473372 Entrez Gene 117195 Human Q96LB0
Synonyms:	GPCR; MRGX3; SNSR1; SNSR2
Protein Families:	Druggable Genome, GPCR, Transmembrane



[View online »](#)

Product images:

Anti-MRGPRX3 / MRGX3 antibody IHC of human brain, cerebellum, Purkinje neurons. Immunohistochemistry of formalin-fixed, paraffin-embedded tissue after heat-induced antigen retrieval. Antibody dilution 21 ug/ml.



Anti-MRGPRX3 / MRGX3 antibody IHC of human Lung, Adenocarcinoma. Immunohistochemistry of formalin-fixed, paraffin-embedded tissue after heat-induced antigen retrieval.