

Product datasheet for **TA340716**

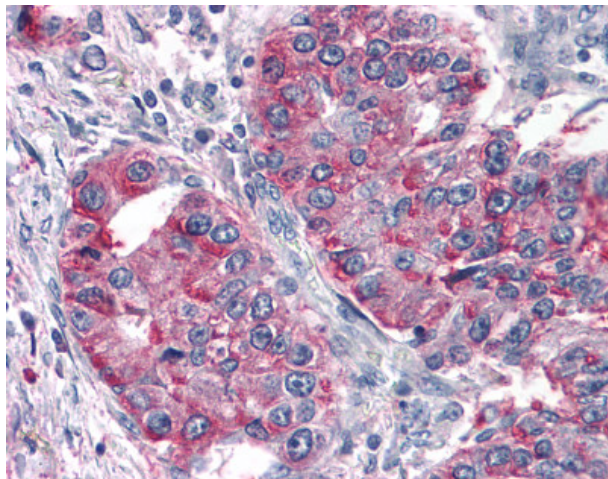
TAS1R3 Rabbit Polyclonal Antibody

Product data:

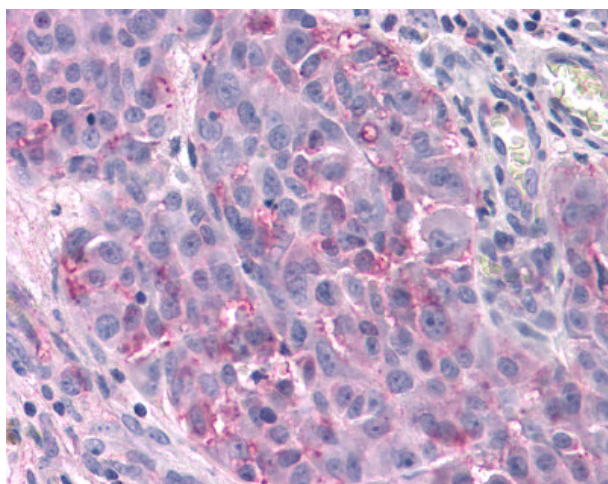
Product Type:	Primary Antibodies
Applications:	IHC
Recommended Dilution:	IHC-P (10 - 20 µg/ml), WB
Reactivity:	Human
Host:	Rabbit
Clonality:	Polyclonal
Immunogen:	T1R3 / TAS1R3 antibody was raised against synthetic 19 amino acid peptide from N-terminal extracellular domain of human TAS1R3. Percent identity with other species by BLAST analysis: Human, Chimpanzee, Gorilla, Baboon (100%); Orangutan (89%).
Formulation:	PBS, 0.1% sodium azide.
Concentration:	lot specific
Purification:	Immunoaffinity purified
Conjugation:	Unconjugated
Storage:	Store at -20°C as received.
Stability:	Stable for 12 months from date of receipt.
Gene Name:	taste 1 receptor member 3
Database Link:	NP_689414 Entrez Gene 83756 Human Q7RTX0
Synonyms:	T1R3
Protein Families:	Transmembrane
Protein Pathways:	Taste transduction



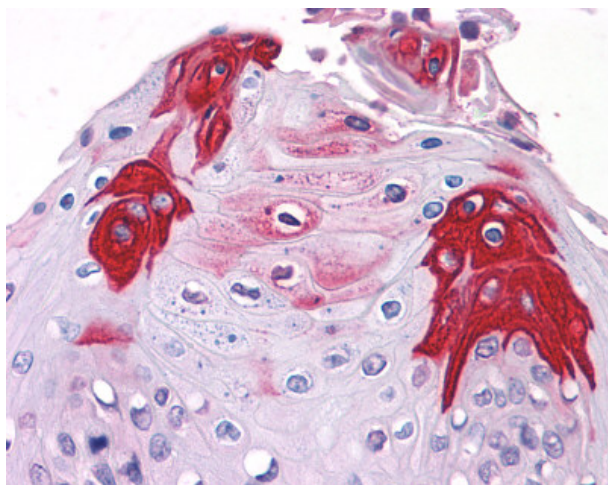
[View online »](#)

Product images:

Anti-T1R3 / TAS1R3 antibody IHC of human Lung, Non-Small Cell Carcinoma. Immunohistochemistry of formalin-fixed, paraffin-embedded tissue after heat-induced antigen retrieval.



Anti-T1R3 / TAS1R3 antibody IHC of human Skin, Melanoma. Immunohistochemistry of formalin-fixed, paraffin-embedded tissue after heat-induced antigen retrieval.



Anti-TAS1R3 antibody IHC of human tongue, taste receptor. Immunohistochemistry of formalin-fixed, paraffin-embedded tissue after heat-induced antigen retrieval.